

Escale
ÄSTHETIK IN LICHT UND RAUM ■

ESCALE Möbel und Leuchten GmbH
Tannenweg 6
D – 74838 Limbach

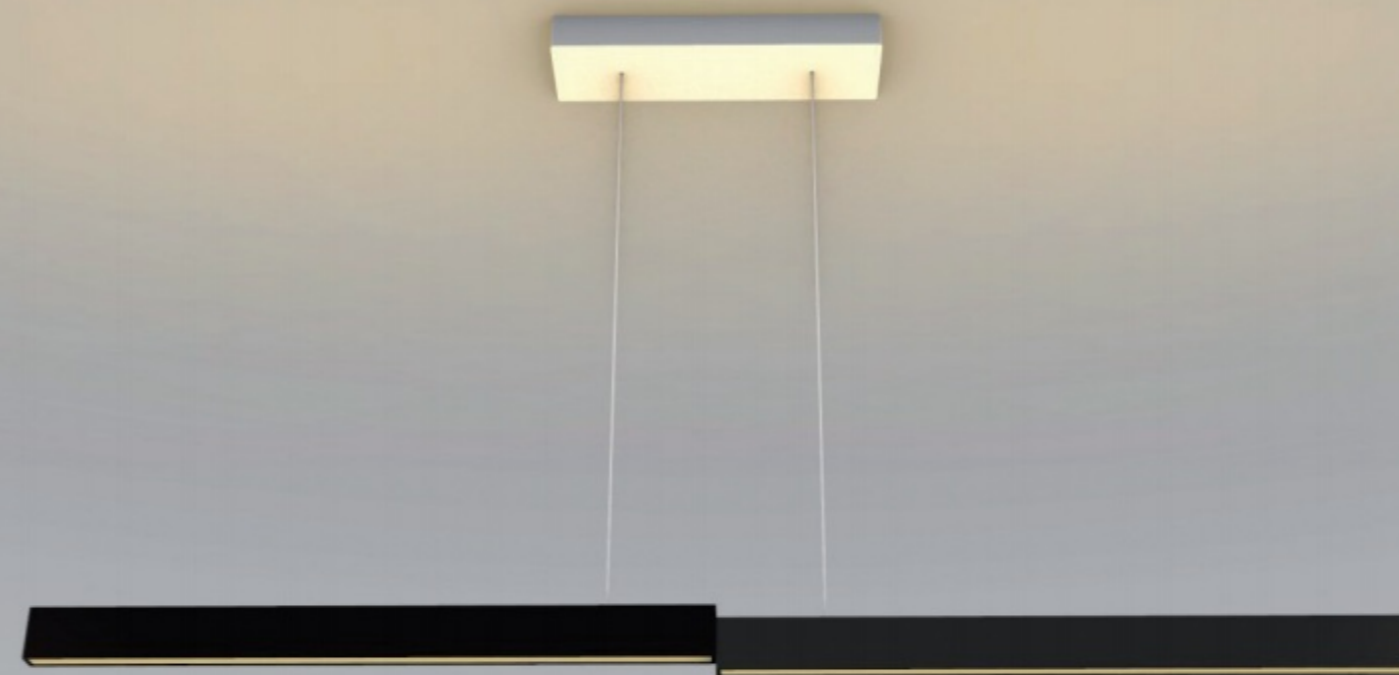
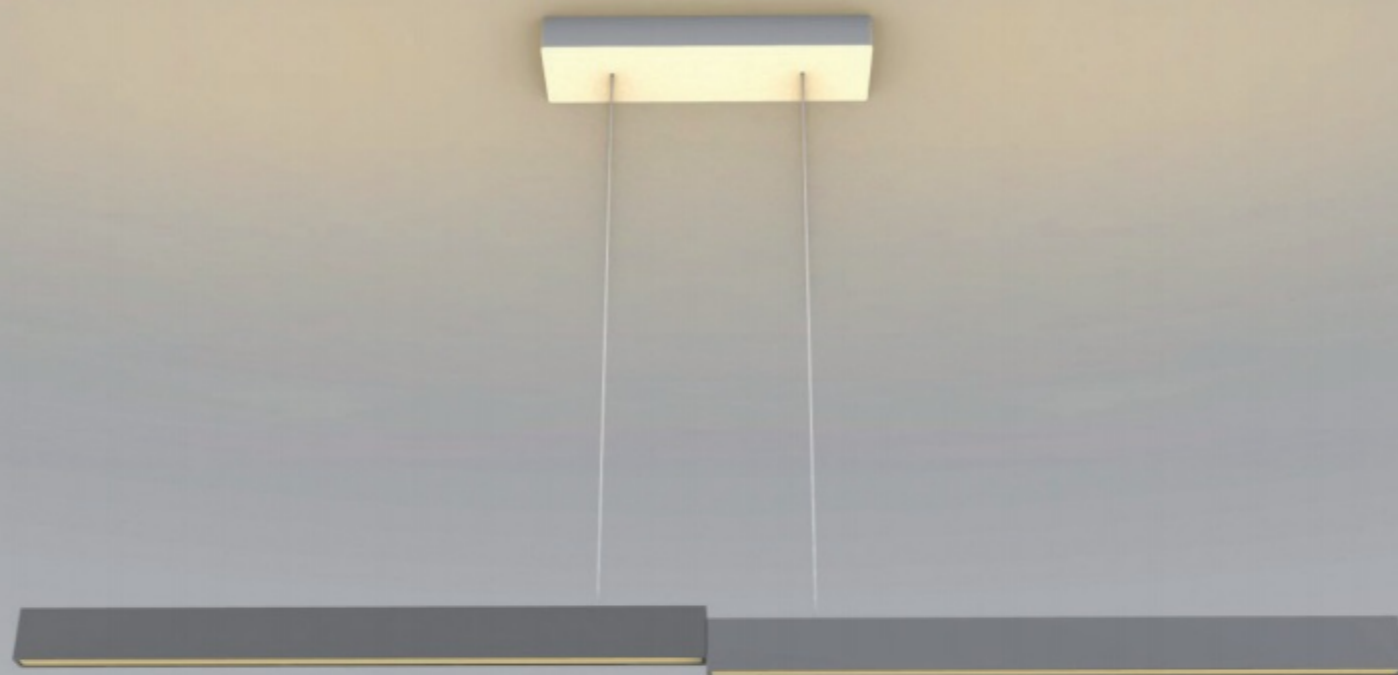
Telefon: + 49 (0) 62 87 / 92 06 0
Telefax: + 49 (0) 62 87 / 92 06 52
E-Mail: info@escale.de
E-Mail Export: ex@escale.de
www.escale.de

220622 Änderungen vorbehalten | Modifications réservées

Escale
Instagram Facebook YouTube #Escaleleuchten

NEWS 2022
Änderungen vorbehalten / subject to change





LEVEL

PENDELLEUCHE | HANGING LAMP

138 902 00 Aluminium eloxiert | anodized aluminium

139 902 00 schwarz eloxiert | anodized black

141 902 00 bronze eloxiert | anodized bronze

DESIGN

Leonhard Bopp / Mosru Mohiuddin

ABMESSUNG | DIMENSIONS

Pendel / pendulum: ↔ 160 x 2,5 cm ↓ max. 140 cm

LEUCHTMITTEL | LAMP

uplight: 2.704 lm @ 2.300 K / 3.520 lm @ 5.000 K

downlight: 3.328 lm @ 2.300 K / 4.000 lm @ 5.000 K

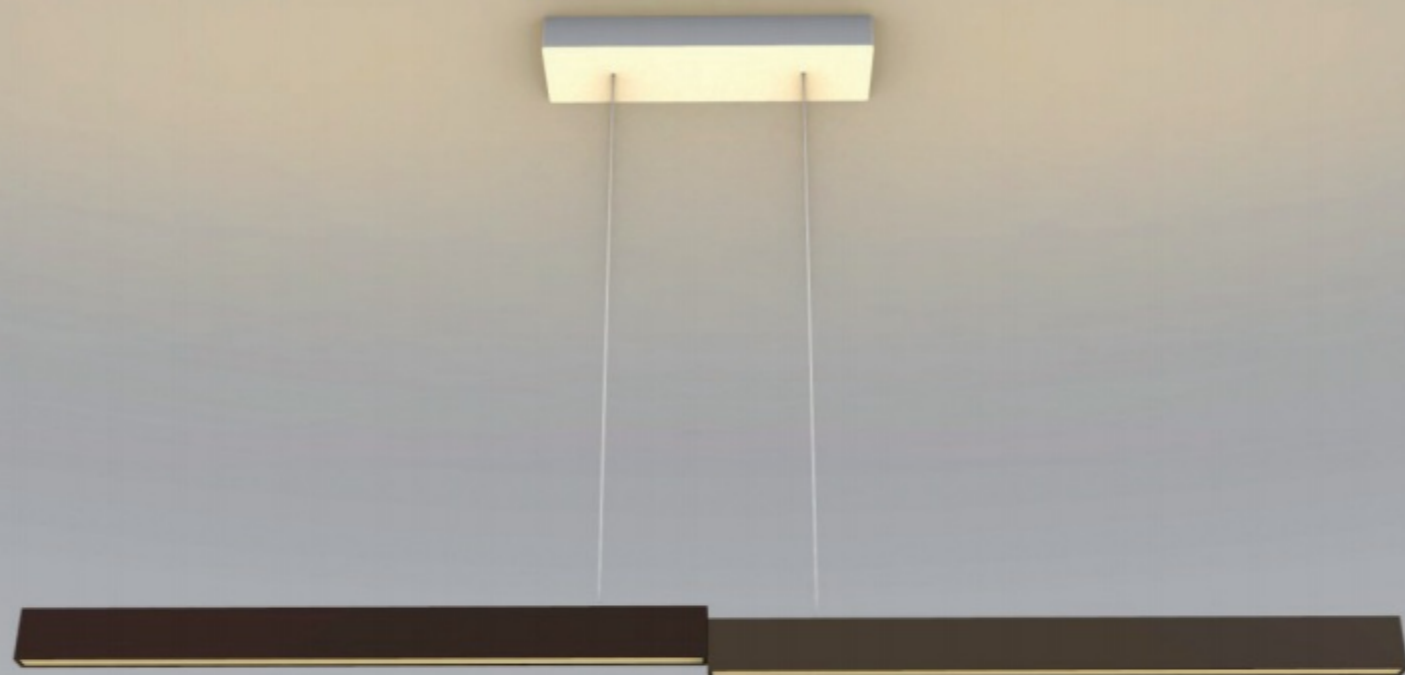
Lumen cpl.: 6.032 lm @ 2.300 K / 7.250 lm @ 5.000 K / Watt cpl.: 57 / Cri 90

SONSTIGES | FEATURES

Ober-/ Unterlicht getrennt dimm- und farbsteuerbar über 2 Taster; variable Höhenverstellung durch Liftsystem

up-/downlight separately dimmable and color controllable via 2 pushbuttons; variable height adjustment via lift system

LEVEL



LEVEL

PENDELLEUCHE | HANGING LAMP

138 602 00 Aluminium eloxiert | anodized aluminium

139 602 00 schwarz eloxiert | anodized black

141 602 00 bronze eloxiert | anodized bronze

DESIGN

Leonhard Bopp / Mosru Mohiuddin

ABMESSUNG | DIMENSIONS

Pendel / pendulum: ↔ 120 x 2,5 cm ↓ max. 140 cm

LEUCHTMITTEL | LAMP

uplight: 1.872 lm @ 2.300 K / 2.250 lm @ 5.000 K

downlight: 2.496 lm @ 2.300 K / 3.000 lm @ 5.000 K

Lumen cpl.: 4.368 lm @ 2.300 K / 5.250 lm @ 5.000 K / Watt cpl.: 41 / Cri 90

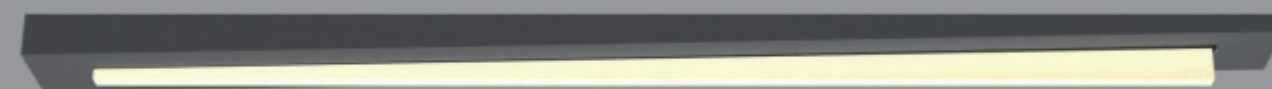
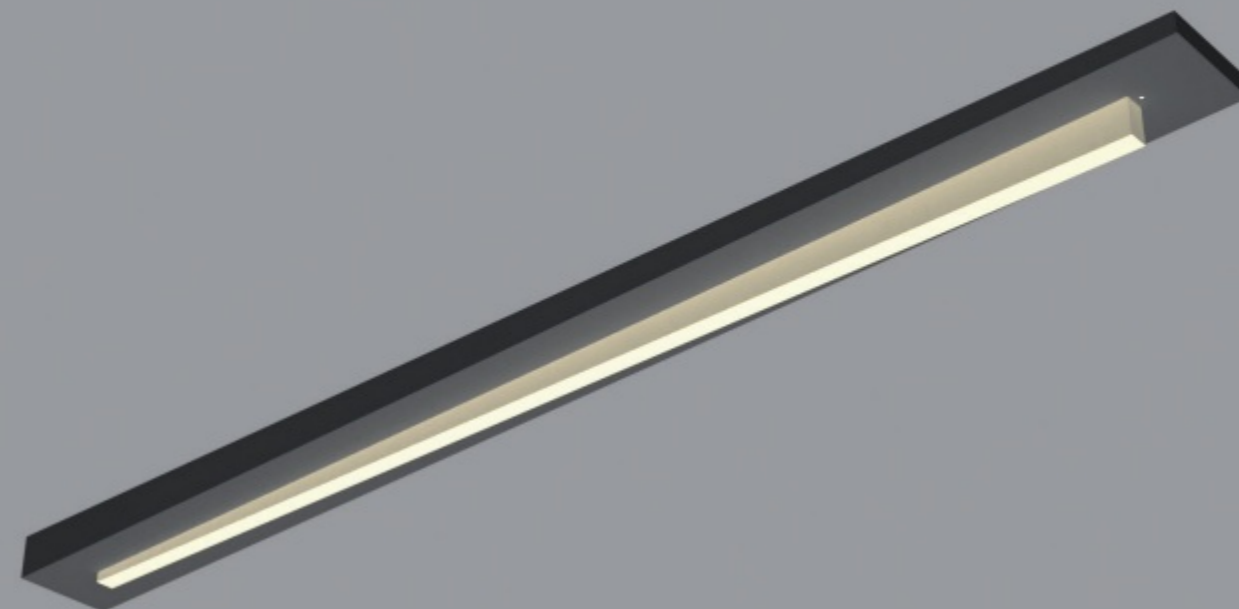
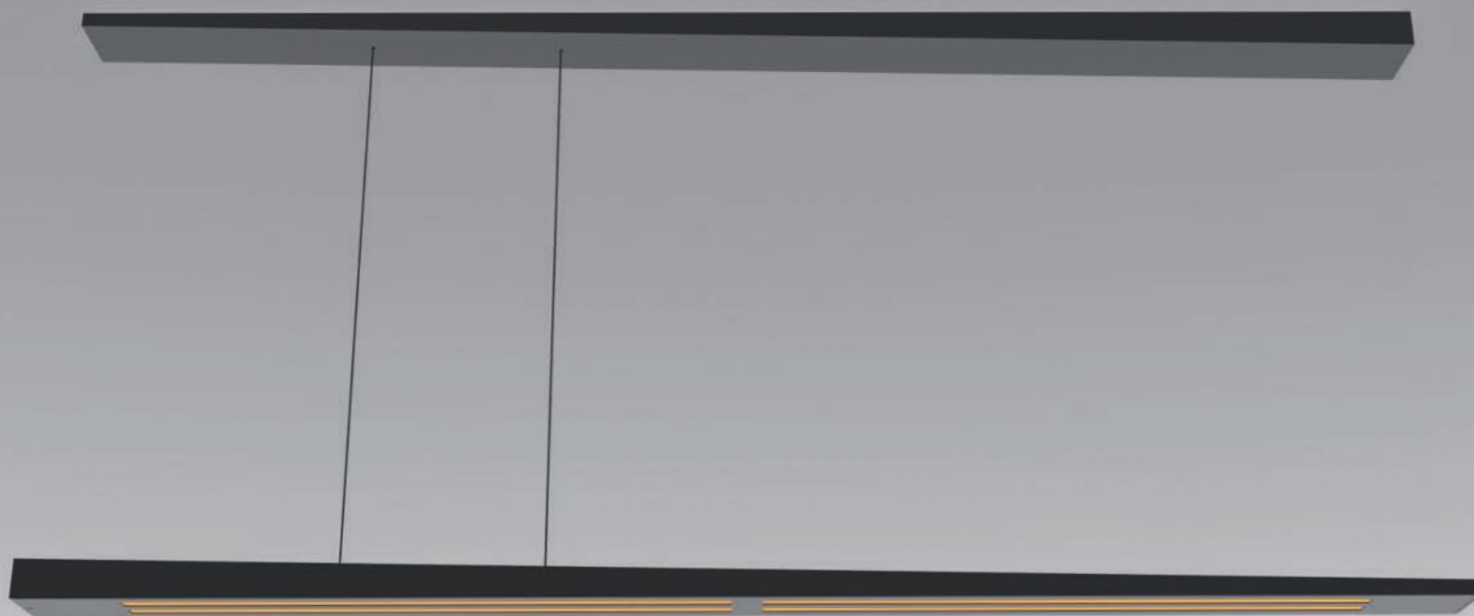
SONSTIGES | FEATURES

Ober-/ Unterlicht getrennt dimm- und farbsteuherbar über 2 Taster; variable Höhenverstellung durch Liftsystem
up-/downlight separately dimmable and color controllable via 2 pushbuttons; variable height adjustment via lift system





SPEED



SPEED

PENDELLEUCHE | HANGING LAMP

146 901 00 schwarz beschichtet | black coated

DESIGN

Mosru Mohiuddin

ABMESSUNG | DIMENSIONS

Pendel / pendulum: ↔ 140 x 8 cm ↓ max. 140 cm

LEUCHTMITTEL | LAMP

Lumen cpl.: 4.992lm @ 2.300K / 6.000 lm @ 5.000 K
Watt cpl.: 46 / Cri 90

SONSTIGES | FEATURES

dimm- und farbsteuerbar über mitgelieferte Wandfernbedienung / Höhenverstellung über Reutlinger
dimmable and color controllable via supplied wall remote control / height adjustment via Reutlinger

SPEED

DECKENLEUCHE | CEILING LAMP

146 801 00 schwarz beschichtet | black coated

DESIGN

Mosru Mohiuddin

ABMESSUNG | DIMENSIONS

↔ 100 x 8 cm ↓ 4 cm

LEUCHTMITTEL | LAMP

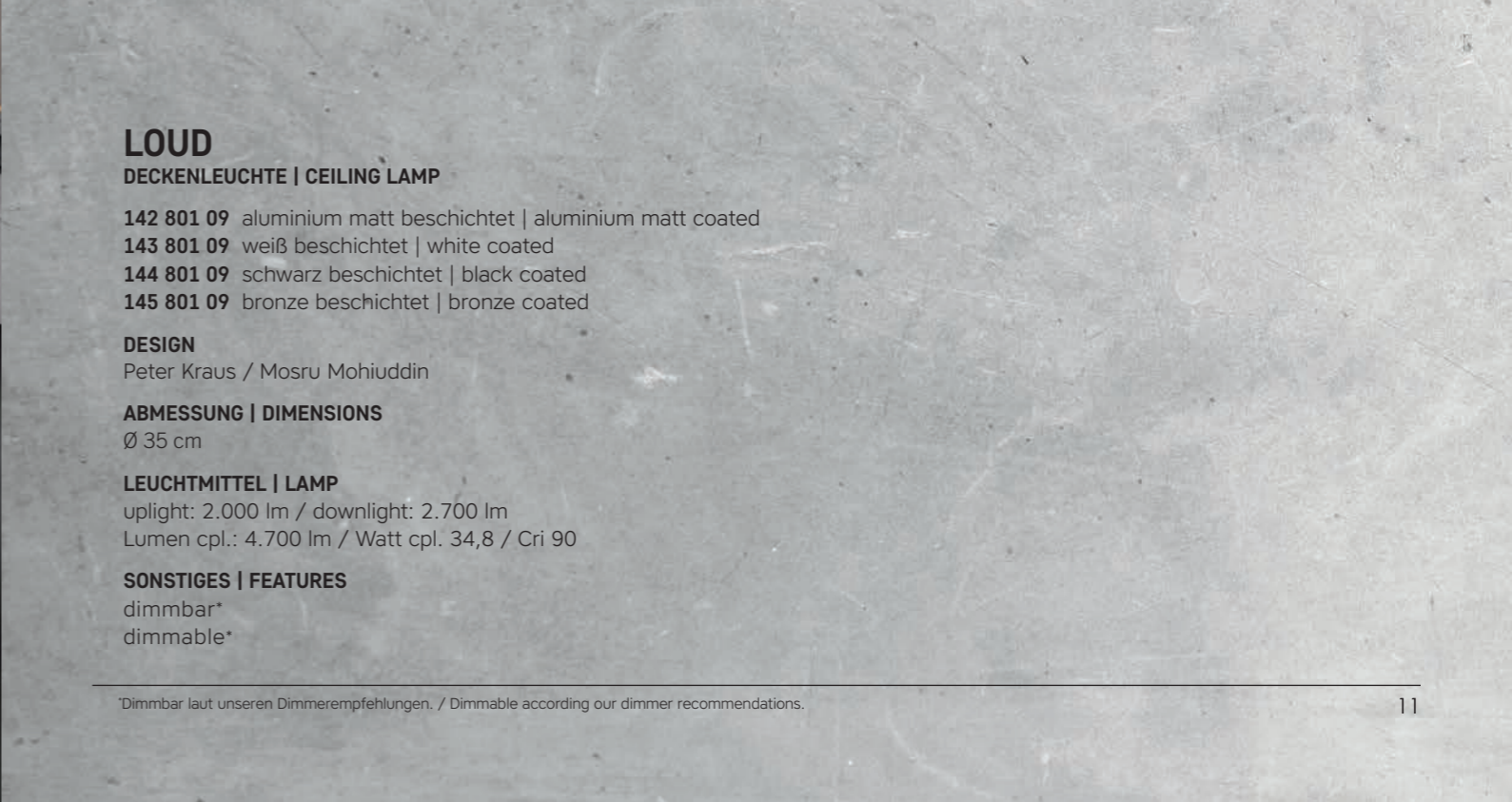
Lumen cpl.: 2.808 lm @ 2.300K / 3.375 lm @ 5.000 K
Watt cpl.: 26 / Cri 90

SONSTIGES | FEATURES

dimm- und farbsteuerbar über mitgelieferte Wandfernbedienung
dimmable and color controllable via supplied wall remote control



LOUD



LOUD
DECKENLEUCHE | CEILING LAMP

- 142 801 09 aluminium matt beschichtet | aluminium matt coated
- 143 801 09 weiß beschichtet | white coated
- 144 801 09 schwarz beschichtet | black coated
- 145 801 09 bronze beschichtet | bronze coated

DESIGN
Peter Kraus / Mosru Mohiuddin

ABMESSUNG | DIMENSIONS
Ø 35 cm

LEUCHTMITTEL | LAMP
uplight: 2.000 lm / downlight: 2.700 lm
Lumen cpl.: 4.700 lm / Watt cpl. 34,8 / Cri 90

SONSTIGES | FEATURES
dimmbar*
dimmbable*

*Dimmbar laut unseren Dimmerempfehlungen. / Dimmable according our dimmer recommendations.



LOUD

DECKENLEUCHE | CEILING LAMP

- 142 802 09 aluminium matt beschichtet | aluminium matt coated
- 143 802 09 weiß beschichtet | white coated
- 144 802 09 schwarz beschichtet | black coated
- 145 802 09 bronze beschichtet | bronze coated

DESIGN

Peter Kraus / Mosru Mohiuddin

ABMESSUNG | DIMENSIONS

Ø 50 cm

LEUCHTMITTEL | LAMP

uplight: 3.100 lm / downlight: 3.900 lm
Lumen cpl.: 7.000 lm / Watt cpl. 51,8 / Cri 90

SONSTIGES | FEATURES

dimmbar*
dimmable*

LOUD

DECKENLEUCHE | CEILING LAMP

- 142 803 09 aluminium matt beschichtet | aluminium matt coated
- 143 803 09 weiß beschichtet | white coated
- 144 803 09 schwarz beschichtet | black coated
- 145 803 09 bronze beschichtet | bronze coated

DESIGN

Peter Kraus / Mosru Mohiuddin

ABMESSUNG | DIMENSIONS

Ø 65 cm

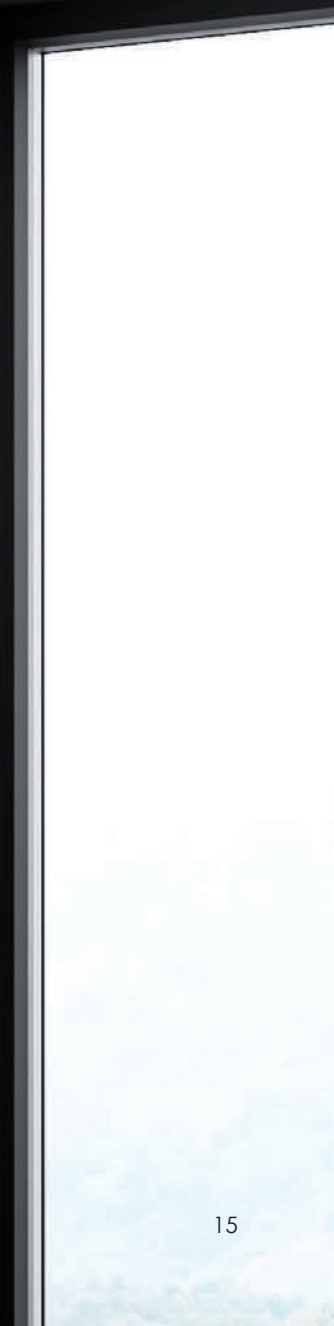
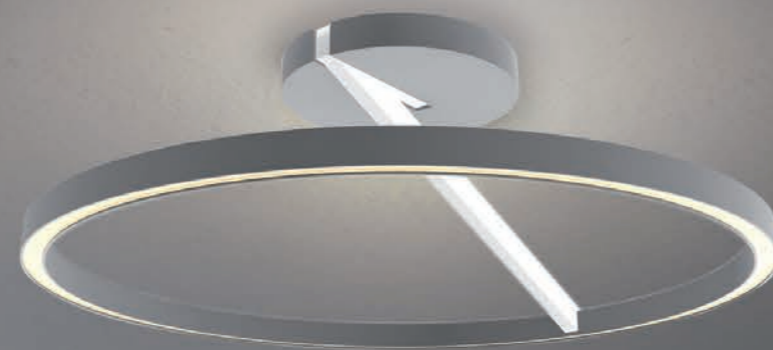
LEUCHTMITTEL | LAMP

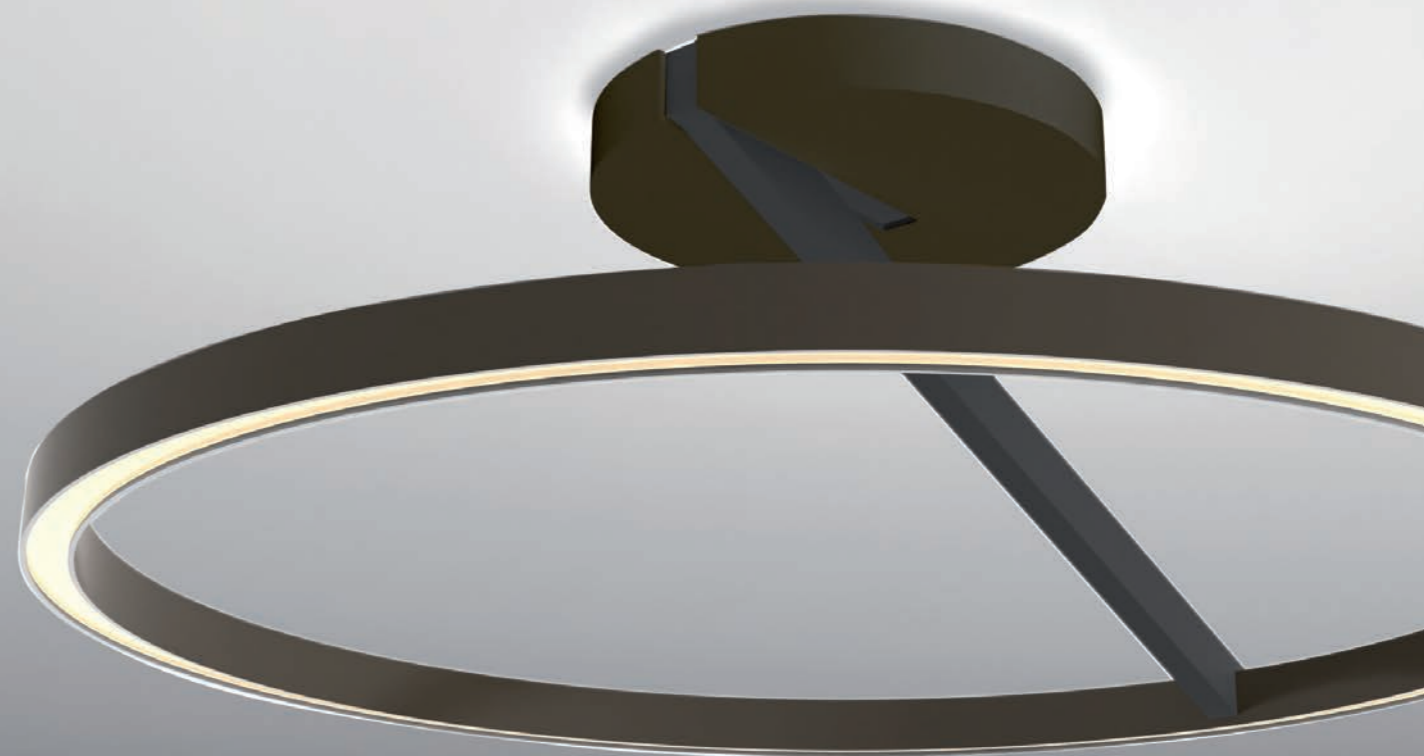
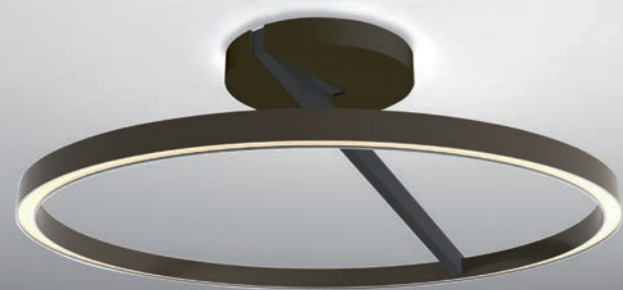
uplight: 4.200 lm / downlight: 5.000 lm
Lumen cpl.: 9.200 lm / Watt cpl. 68 / Cri 90

SONSTIGES | FEATURES

dimmbar*
dimmable*

VISION





VISION

DECKENLEUCHE | CEILING LAMP

134 602 00 weiß - alu matt beschichtet | white - aluminium matt coated

135 602 00 weiß - weiß beschichtet | white - white coated

136 602 00 schwarz - schwarz beschichtet | black - black coated

137 602 00 schwarz - bronze beschichtet | black - bronze coated

DESIGN

Mosru Mohiuddin

ABMESSUNG | DIMENSIONS

Ø 60 cm ↓ 33 cm

LEUCHTMITTEL | LAMP

uplight: 3.640 lm @ 2.300 K / 4.375 lm @ 5.000 K

downlight: 3.744 lm @ 2.300 K / 4.500 lm @ 5.000 K

Lumen cpl.: 7.384 lm @ 2.300 K / 8.875 lm @ 5.000 K / Watt cpl.: 70 / Cri 90

SONSTIGES | FEATURES

Ober-/ Unterlicht getrennt stufenlos dimm- und farbsteuherbar per Smartphone, Alexa, Google Home oder mitgelieferter Fernbedienung | up-/downlight separately infinitely dimmable and color controllable via smartphone, Alexa, Google Home or supplied remote control



VISION

DECKENLEUCHE | CEILING LAMP

134 802 00 weiß - alu matt beschichtet | white - aluminium matt coated

135 802 00 weiß - weiß beschichtet | white - white coated

136 802 00 schwarz - schwarz beschichtet | black - black coated

137 802 00 schwarz - bronze beschichtet | black - bronze coated

DESIGN

Mosru Mohiuddin

ABMESSUNG | DIMENSIONS

Ø 60 cm ↓ 33 cm

LEUCHTMITTEL | LAMP

uplight: 3.640 lm @ 2.300 K / 4.375 lm @ 5.000 K

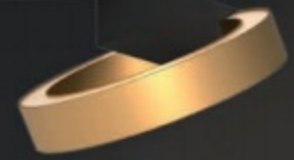
downlight: 3.744 lm @ 2.300 K / 4.500 lm @ 5.000 K

Lumen cpl.: 7.384 lm @ 2.300 K / 8.875 lm @ 5.000 K / Watt cpl.: 70 / Cri 90

SONSTIGES | FEATURES

Ober-/ Unterlicht getrennt stufenlos dimm- und farbsteuherbar über Casambi-Modul up-/downlight separately infinitely dimmable and color controllable via casambi-module

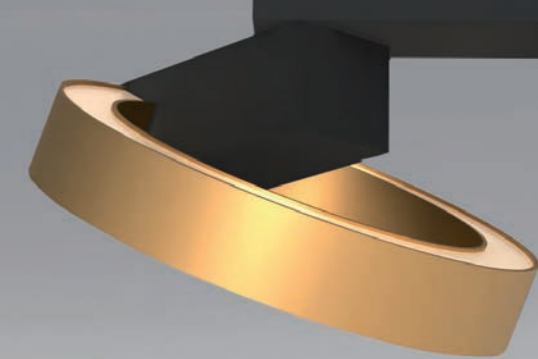
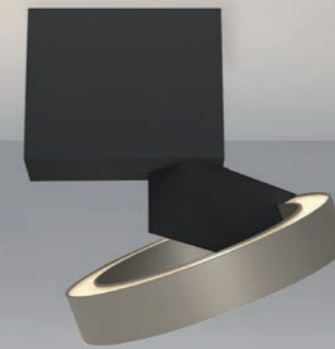
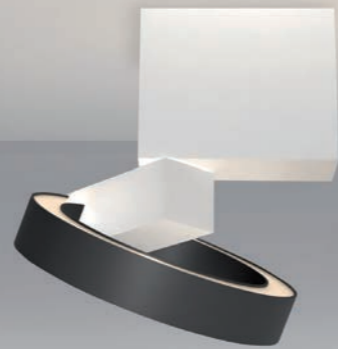
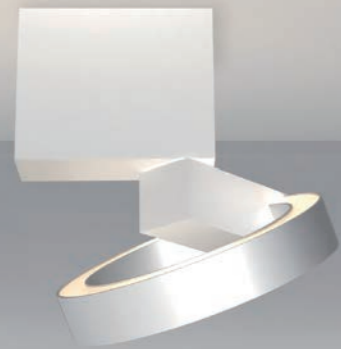
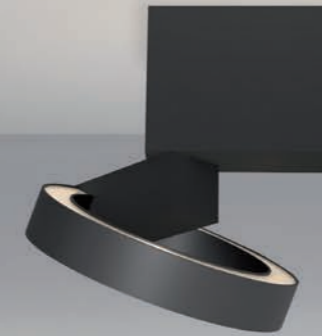
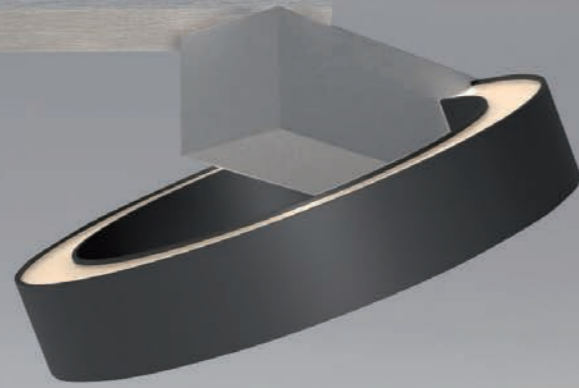




MIDNIGHT PRO



MIDNIGHT PRO



MIDNIGHT PRO

SPOT 1-FLAMMIG | SPOT 1-LIGHT

... 610 00

DESIGN

Mosru Mohiuddin

ABMESSUNG | DIMENSIONS

Ø 17 cm ↓ max. 27 cm





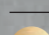
LEUCHTMITTEL | LAMP

uplight: 1.750 lm @ 2.700 K / 1.900 lm @ 4.000 K
 downlight: 1.750 lm @ 2.700 K / 1.900 lm @ 4.000 K
 Lumen cpl.: 3.500 lm @ 2.700 K / 3.800 lm @ 4.000 K / Watt cpl.: 30 / Cri 95

SONSTIGES | FEATURES

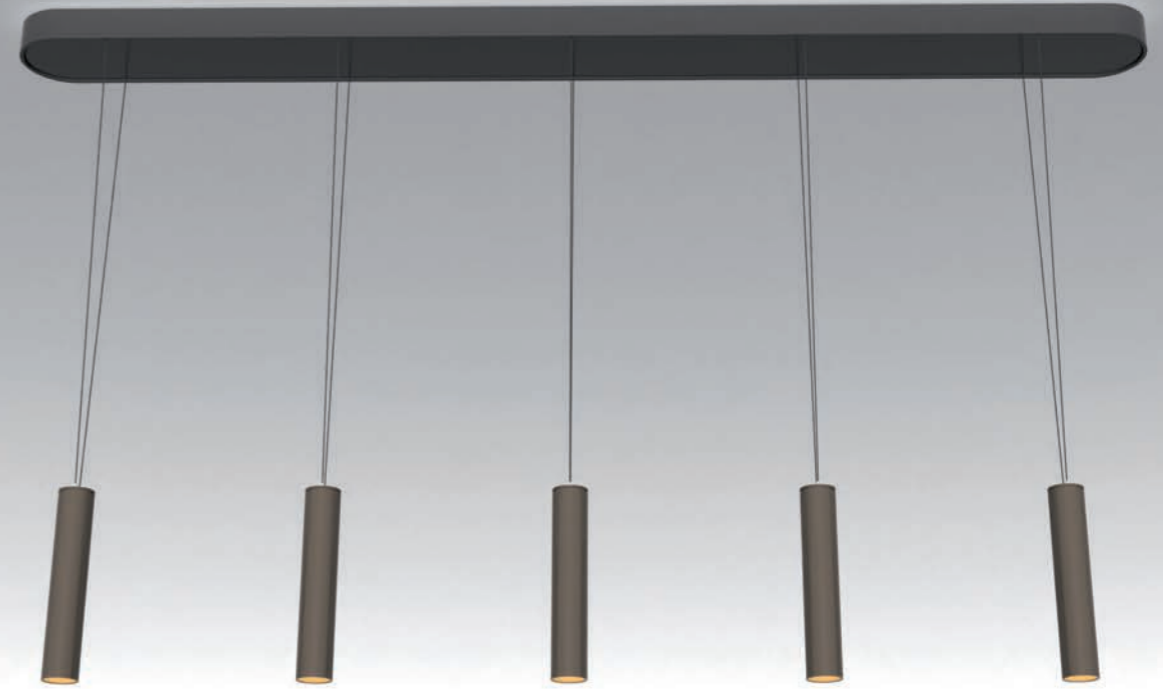
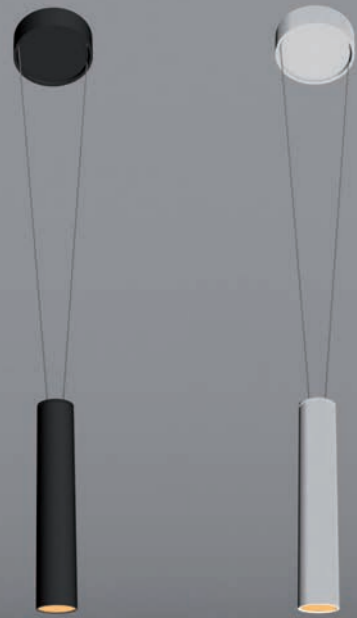
Ober-/ Unterlicht getrennt stufenlos dimm- und farbsteuerbar über Casambi-Modul
 up-/downlight separately infinitely dimmable and color controllable via casambi-module



	KORPUS CASE		
RING OBERFLÄCHEN RING SURFACES	weiß white	Alu geschliffen smoothed alum.	schwarz black
 Aluminium eloxiert anodized aluminium	882	886	893
 rosé eloxiert anodized rose	883	887	894
 taupe eloxiert anodized taupe	884	889	895
 anthrazit eloxiert anodized anthracite	885	890	896
 gold eloxiert anodized gold	904	905	906

OPLUS 2.0





OPUS 2.0

DECKENGEHÄUSE | CEILING HOUSING

152 010 97 weiß beschichtet | white coated
152 010 33 schwarz beschichtet | black coated

DESIGN

Leonhard Bopp / Mosru Mohiuddin

ABMESSUNG | DIMENSIONS

Ø 10 cm ↓ 3,5 cm

OPUS 2.0

DECKENGEHÄUSE | CEILING HOUSING

152 020 97 weiß beschichtet | white coated
152 020 33 schwarz beschichtet | black coated

DESIGN

Leonhard Bopp / Mosru Mohiuddin

ABMESSUNG | DIMENSIONS

Ø 30 cm ↓ 3,5 cm

OPUS 2.0

DECKENGEHÄUSE | CEILING HOUSING

152 030 97 weiß beschichtet | white coated
152 030 33 schwarz beschichtet | black coated

DESIGN

Leonhard Bopp / Mosru Mohiuddin

ABMESSUNG | DIMENSIONS

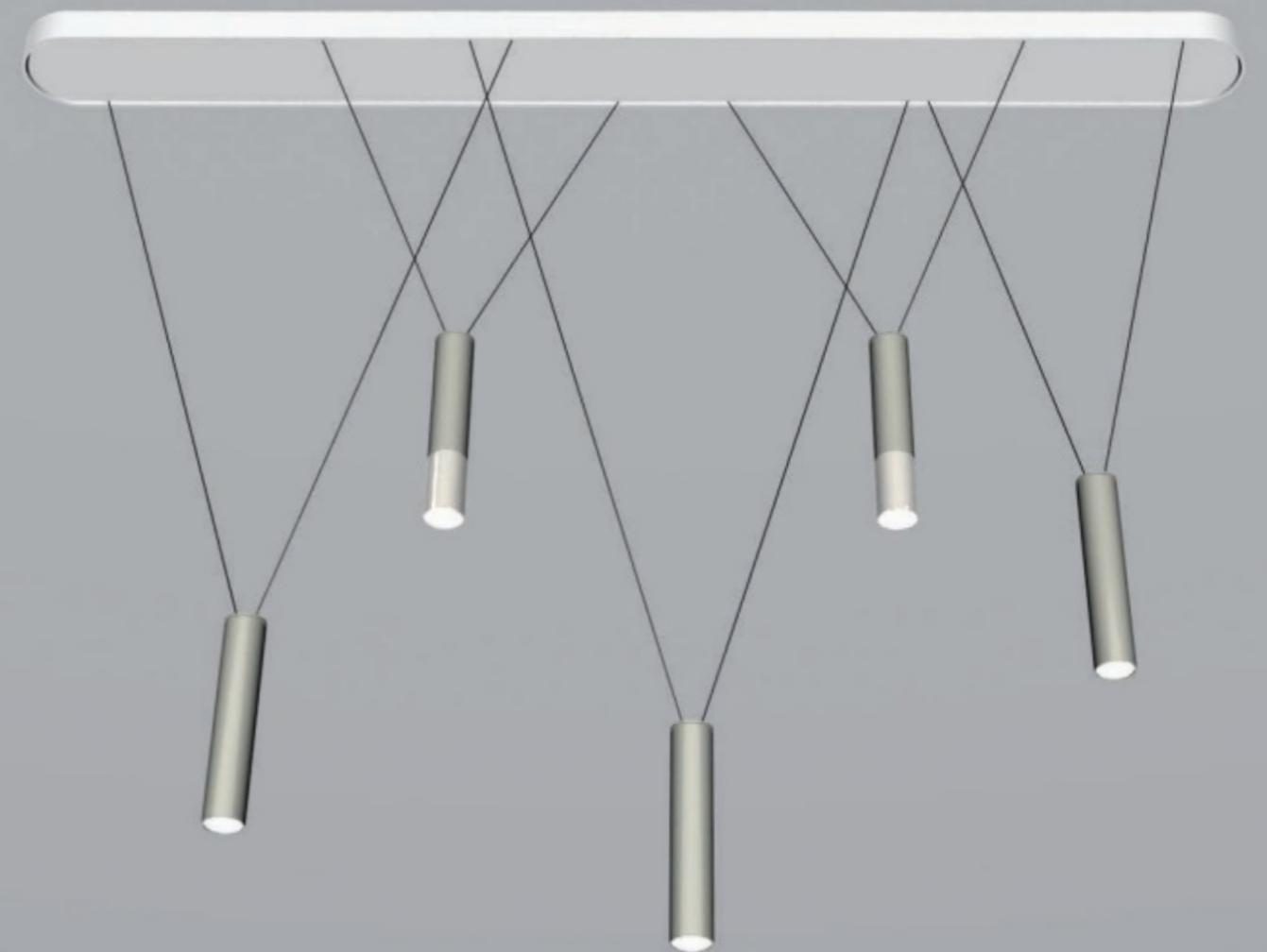
↔ 120 x 10 cm ↓ 3,5 cm

OPLUS 2.0





OPUS 2.0



OPUS 2.0

PENDELELEMENT L (LEADER)
PENDULUM ELEMENT L (LEADER)

- 153 901 00 Aluminium eloxiert | anodized aluminium
- 154 901 00 taupe eloxiert | anodized taupe
- 155 901 00 bronze eloxiert | anodized bronze
- 156 901 00 gold eloxiert | anodized gold
- 157 901 00 schwarz eloxiert | anodized black

DESIGN

Leonhard Bopp / Mosru Mohiuddin

ABMESSUNG | DIMENSIONS

Ø 3,5 cm; Länge / length: 18 cm ↓ max. 140 cm

LEUCHTMITTEL | LAMP

Lumen cpl.: 830 lm @ 2.200 K / 850 lm @ 5.600 K
Watt cpl.: 8,5 / Cri > 95

SONSTIGES | FEATURES

dim- und farbsteuerbar per Taster
dimnable and color controllable by push button

OPUS 2.0

PENDELELEMENT F (FOLLOWER)
PENDULUM ELEMENT F (FOLLOWER)

- 153 902 00 Aluminium eloxiert | anodized aluminium
- 154 902 00 taupe eloxiert | anodized taupe
- 155 902 00 bronze eloxiert | anodized bronze
- 156 902 00 gold eloxiert | anodized gold
- 157 902 00 schwarz eloxiert | anodized black

DESIGN

Leonhard Bopp / Mosru Mohiuddin

ABMESSUNG | DIMENSIONS

Ø 3,5 cm; Länge / length: 18 cm ↓ max. 140 cm

LEUCHTMITTEL | LAMP

Lumen cpl.: 830 lm @ 2.200 K / 850 lm @ 5.600 K
Watt cpl.: 8,5 / Cri > 95

OPUS 2.0

DIFFUSELEMENT L (LEADER)
DIFFUSE ELEMENT L (LEADER)

- 153 903 00 Aluminium eloxiert | anodized aluminium
- 154 903 00 taupe eloxiert | anodized taupe
- 155 903 00 bronze eloxiert | anodized bronze
- 156 903 00 gold eloxiert | anodized gold
- 157 903 00 schwarz eloxiert | anodized black

DESIGN

Leonhard Bopp / Mosru Mohiuddin

ABMESSUNG | DIMENSIONS

Ø 3,5 cm; Länge / length: 18 cm ↓ max. 140 cm

LEUCHTMITTEL | LAMP

Lumen cpl.: 830 lm @ 2.200 K / 850 lm @ 5.600 K
Watt cpl.: 8,5 / Cri > 95

SONSTIGES | FEATURES

dim- und farbsteuerbar per Taster
dimnable and color controllable by push button

OPUS 2.0

DIFFUSELEMENT F (FOLLOWER)
DIFFUSE ELEMENT F (FOLLOWER)

- 153 904 00 Aluminium eloxiert | anodized aluminium
- 154 904 00 taupe eloxiert | anodized taupe
- 155 904 00 bronze eloxiert | anodized bronze
- 156 904 00 gold eloxiert | anodized gold
- 157 904 00 schwarz eloxiert | anodized black

DESIGN

Leonhard Bopp / Mosru Mohiuddin

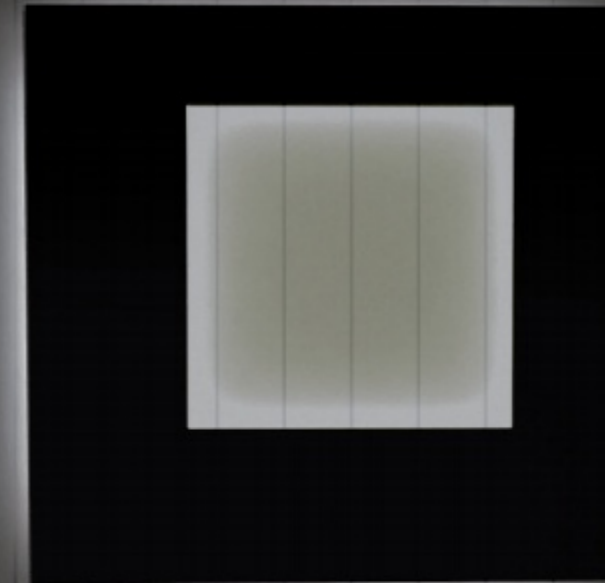
ABMESSUNG | DIMENSIONS

Ø 3,5 cm; Länge / length: 18 cm ↓ max. 140 cm

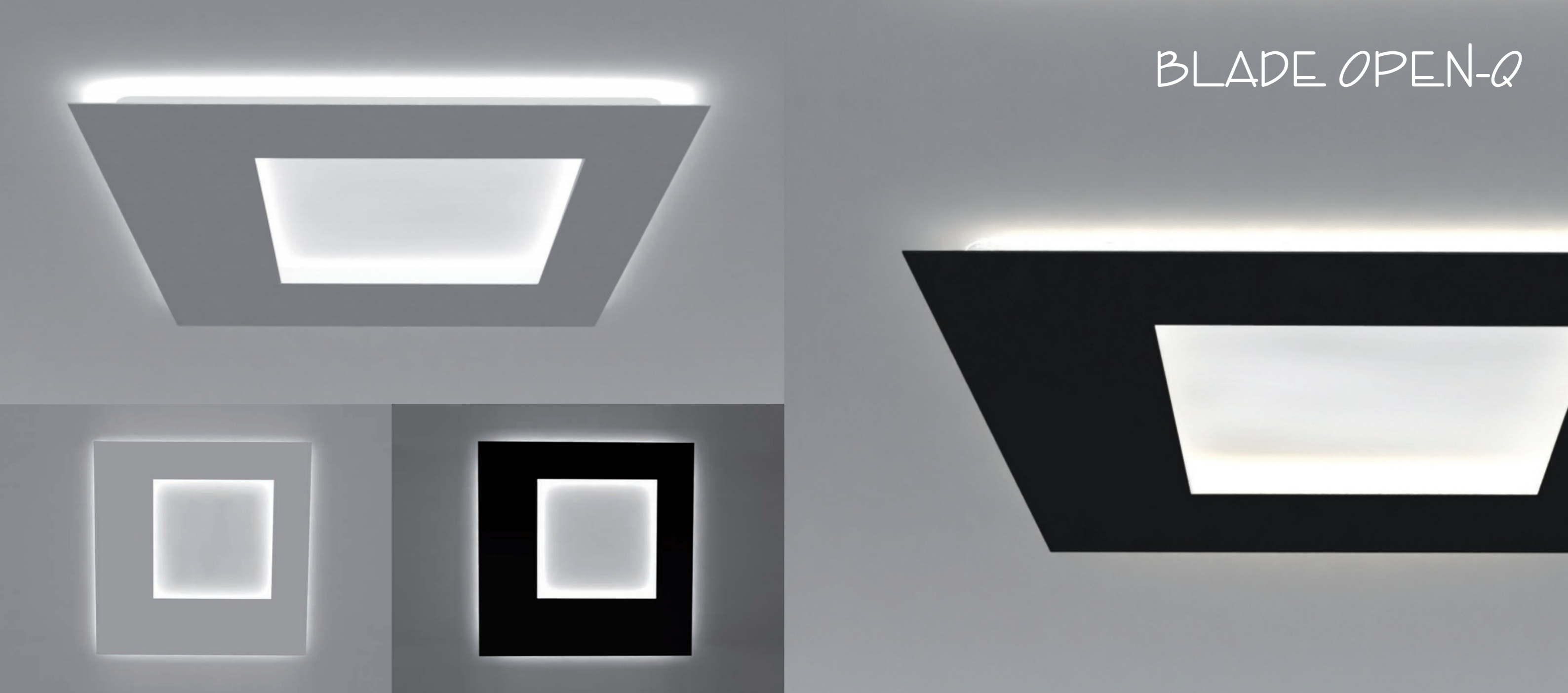
LEUCHTMITTEL | LAMP

Lumen cpl.: 830 lm @ 2.200 K / 850 lm @ 5.600 K
Watt cpl.: 8,5 / Cri > 95

BLADE OPEN-Q



BLADE OPEN-Q



BLADE OPEN-Q

WAND-/ DECKENLEUCHTE
WALL CEILING LAMP

DESIGN
Peter Kraus

ABMESSUNG | DIMENSIONS
79 x 79 cm ↓ 3,5 cm

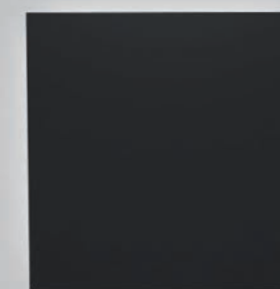
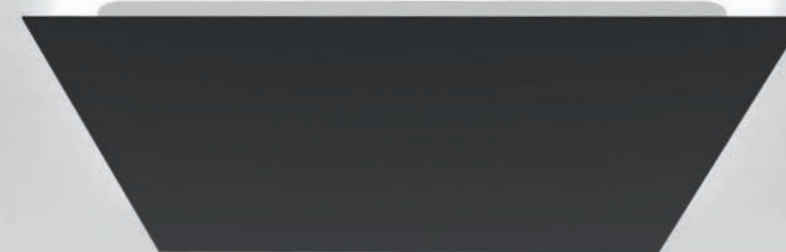
LEUCHTMITTEL | LAMP
ausen: Lumen cpl.: 5.400 lm @ 2.700 K
innen: Lumen cpl.: 6.900 lm @ 2.7000 K
91 W cpl.: (ausen: 51; innen: 40) / Cri 90

SONSTIGES | FEATURES
dimmbar* / dimmable*

OBERFLÄCHEN SURFACES	ARTIKELNUMMER ARTICLE NUMBER	ZUBEHÖR ACCESSORY
 silber eloxiert anodized silver	158 804 09	Verbindungs-Set connecting element
 weiß white	159 804 09	Plug an Play Kabel plug and play cable
 Betonoptik concrete look	160 804 09	
 taupe eloxiert anodized taupe	162 804 09	
 anthrazit DB 703 anthracite DB 703	163 804 09	
 schwarz black	165 804 09	



BLADE-Q



BLADE-Q

WAND-/ DECKENLEUCHE
WALL CEILING LAMP

DESIGN
Peter Kraus

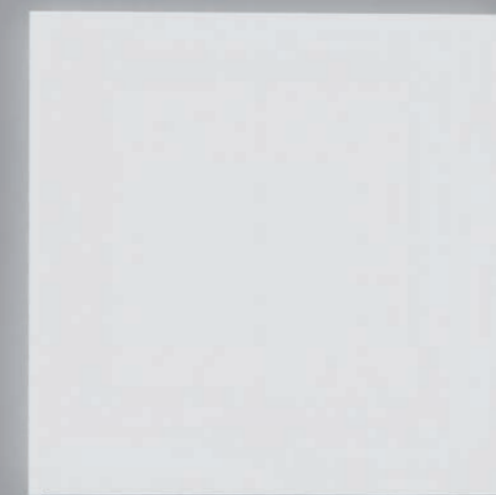
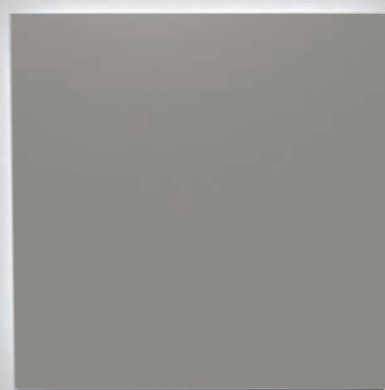
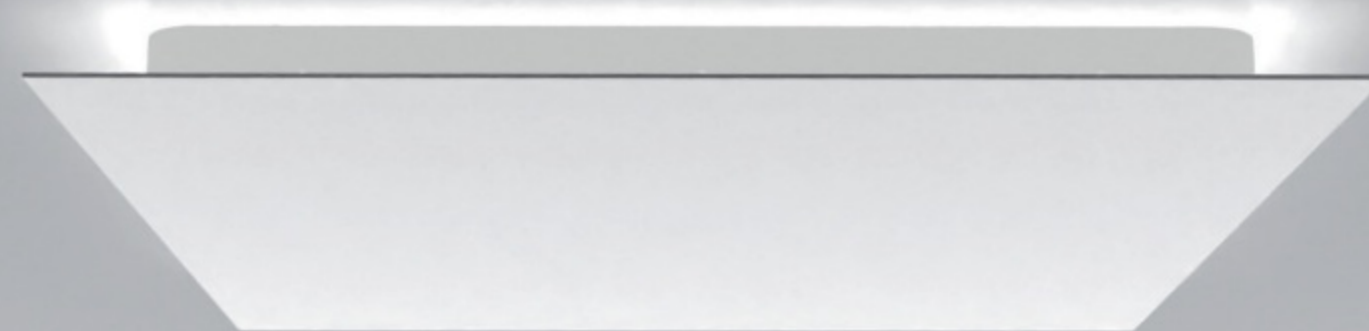
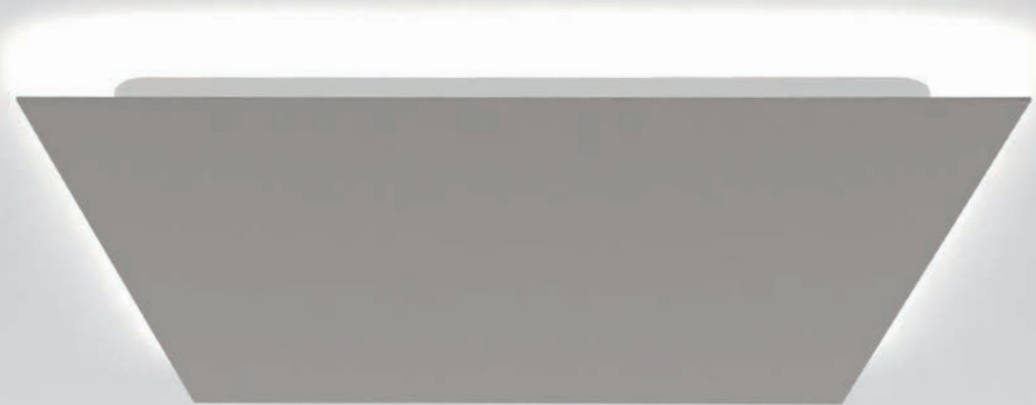
ABMESSUNG | DIMENSIONS
34 x 34 cm | 3,5 cm

LEUCHTMITTEL | LAMP
Lumen cpl.: 2.400 lm @ 2.700 K
Watt cpl.: 18
Cri 90

SONSTIGES | FEATURES
dimmbar* / dimmable*

OBERFLÄCHEN SURFACES	ARTIKELNUMMER ARTICLE NUMBER	ZUBEHÖR ACCESSORY
 silber eloxiert anodized silver	158 801 09	Verbindungs-Set connecting element
 weiß white	159 801 09	Plug an Play Kabel plug and play cable
 Betonoptik concrete look	160 801 09	
 taupe eloxiert anodized taupe	162 801 09	
 anthrazit DB 703 anthracite DB 703	163 801 09	
 schwarz black	165 801 09	

*Dimmbar laut unseren Dimmerempfehlungen. / Dimmable according our dimmer recommendations.



BLADE-Q

WAND-/ DECKENLEUCHTE
WALL CEILING LAMP

DESIGN

Peter Kraus

ABMESSUNG | DIMENSIONS

44 x 44 cm ↓ 3,5 cm

LEUCHTMITTEL | LAMP

Lumen cpl.: 3.400 lm @ 2.700 K

Watt cpl.: 25

Cri 90

SONSTIGES | FEATURES

dimmbar* / dimmable*

OBERFLÄCHEN SURFACES	ARTIKELNUMMER ARTICLE NUMBER	ZUBEHÖR ACCESSORY
 silber eloxiert anodized silver	158 802 09	Verbindungs-Set connecting element
 weiß white	159 802 09	Plug an Play Kabel plug and play cable
 Betonoptik concrete look	160 802 09	
 taupe eloxiert anodized taupe	162 802 09	
 anthrazit DB 703 anthracite DB 703	163 802 09	
 schwarz black	165 802 09	

BLADE-Q

WAND-/ DECKENLEUCHTE
WALL CEILING LAMP

DESIGN

Peter Kraus

ABMESSUNG | DIMENSIONS

59 x 59 cm ↓ 3,5 cm

LEUCHTMITTEL | LAMP

Lumen cpl.: 4.900 lm @ 2.700 K

Watt cpl.: 36

Cri 90

SONSTIGES | FEATURES

dimmbar* / dimmable*

OBERFLÄCHEN SURFACES	ARTIKELNUMMER ARTICLE NUMBER	ZUBEHÖR ACCESSORY
 silber eloxiert anodized silver	158 803 09	Verbindungs-Set connecting element
 weiß white	159 803 09	Plug an Play Kabel plug and play cable
 Betonoptik concrete look	160 803 09	
 taupe eloxiert anodized taupe	162 803 09	
 anthrazit DB 703 anthracite DB 703	163 803 09	
 schwarz black	165 803 09	