

CON  
TR  
ACT

Contract Catalogue  
by Lumina

- Daphne LED
- Dot
- Eva
- Flo
- Galileo LED
- Matrix
- Perla

Index	Products	Finishes	Specifications
<b>Daphne LED</b>	<b>13</b>	<b>90</b>	<b>98</b>
Daphne Terra LED	14		
Daphne LED	16		
Daphinette LED	18		
Daphine Parete LED	20		
<b>Dot</b>	<b>25</b>	<b>92</b>	<b>100</b>
<b>Eva</b>	<b>35</b>	<b>93</b>	<b>101</b>
<b>Flo</b>	<b>45</b>	<b>94</b>	<b>102</b>
Flo Bedside	46		
Flo Wall	48		
Flo Clamp	50		
Flo Floor	51		
Flo Lounge	52		
Flo Desk	54		
Flo Grommet F46	56		
Flo Grommet F20	56		
Flo Grommet for USM Table	58		
Flo Grommet/L for USM Table	58		
<b>Galileo LED</b>	<b>65</b>		<b>106</b>
Galileo LED	66		
Galileo LED mini	70		
<b>Matrix</b>	<b>73</b>		<b>107</b>
Matrix Otto P	74		
Matrix Quattro P	75		
Matrix Otto	76		
Matrix Doppia	77		
Matrix Mono	78		
<b>Perla</b>	<b>81</b>		<b>110</b>
Perla	82		
Perla Garden	84		



## Lumina

Since 1980 we have been designing and producing technical and decorative lamps. Lumina, founded by Tommaso Cimini (Daphne, 1975), is today managed by the sons Ettore and Andrea, who carry on the family business using the most advanced technologies. Our products are distributed worldwide and displayed in some of the most famous museums and galleries in the world. Our production is made in the Arluno plants (Greater Milano Area), supported by local skilled craftsmen. We firmly believe in craftsmanship and high quality manufacturing. Our skills and experience, together with passion for technical innovation, have been adopted throughout the manufacturing process to achieve lamps with great attention to every detail.

Opposite: Lumina factory  
Above: Lumina factory floor





## Customised production

Our short manufacturing chain makes it possible to offer custom solutions for our clients.

We produce the vast majority of the metal components used in our lights in-house, and so can offer an array of customization options. For the Sorbonne Clignancourt Library in Paris, we have produced the Flo Grommet with a bespoke square base. For Me London and the Monaco Yacht Club we delivered custom Flo Bedsides that were longer than our standard lights.

Opposite: Flo components  
Above: Flo foot detail  
Below: Daphne assembly





### Bespoke finishes

Bespoke finishing is available on request thanks to our new integrated painting unit.

Opposite: Flo bases on the drying racks  
Above: Flo heads  
Below: Drying racks





### The designers

Lumina has had a long history of collaborating with various talented designers and most recently with Foster + Partners to develop unique, innovative and beautiful products.

Opposite: Ettore Cimini  
Right: Tommaso Cimini,  
founder of Lumina



Daphine LED  
by Tommaso Cimini

“For years Lumina has been involved in the research and in the development of new solutions in the application of LED lighting technology, by updating older products and creating new ones. Daphine LED has always been an important challenge. The objective was to preserve the same lamp enhancing its outstanding performance with LED technology. Today, we are proud to present Daphine LED, a highly efficient, totally reliable lighting product. It is identical to the Classic Daphine in shape and in movement, but it is a better performing product featuring a more powerful light source with lower energy consumptions.”

Ettore Cimini

- Daphine LED
- Daphine Terra LED
- Daphinette LED
- Daphine Parete LED

Daphine finishes: 90  
Daphine specifications: 98

Daphine Terra LED



Daphine Terra LED

Above: magnetic key for switch setting. Using the magnetic key, provided with the lamp, it is possible to change the two step switch setting to the dimmer and on/off function. With another click the lamp resets to the two step switch function.  
Below: two step switch



Daphne LED



### Light engine

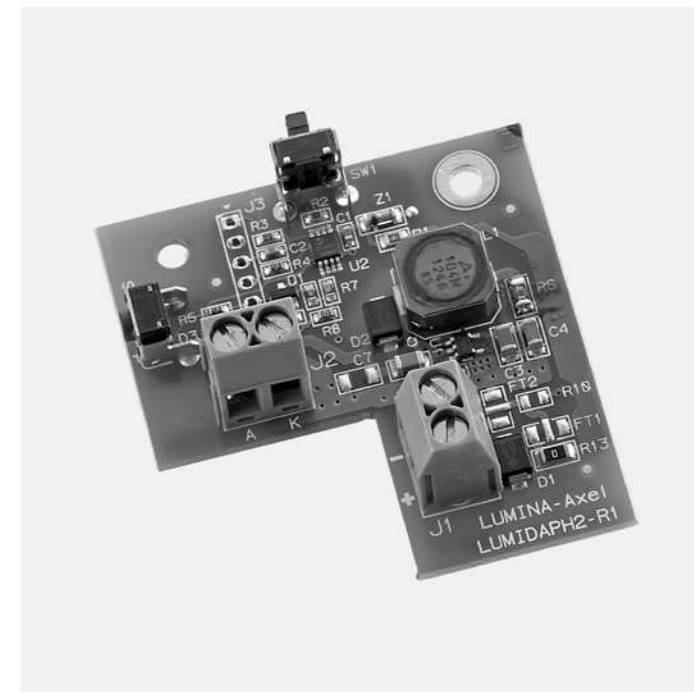
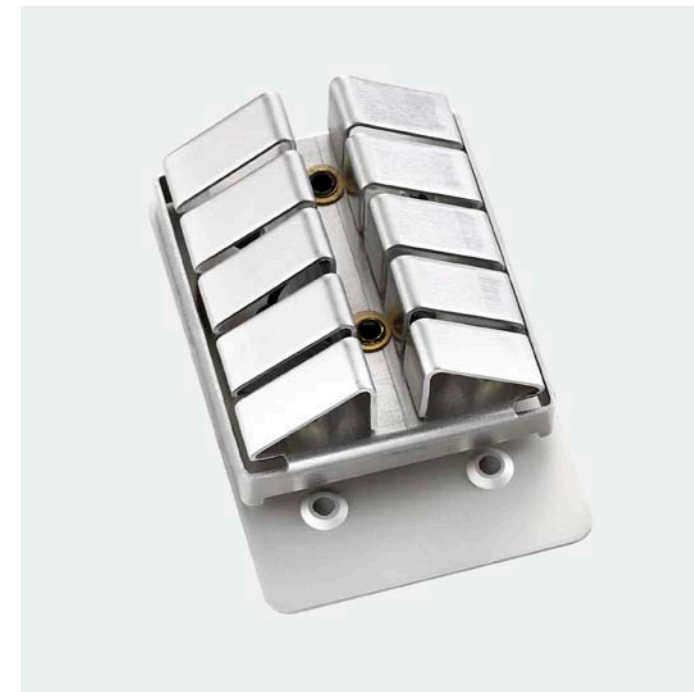
Above: 8W LED head  
Below: 4W LED head





#### Technical details

Above: heat sink  
Below: LED driver



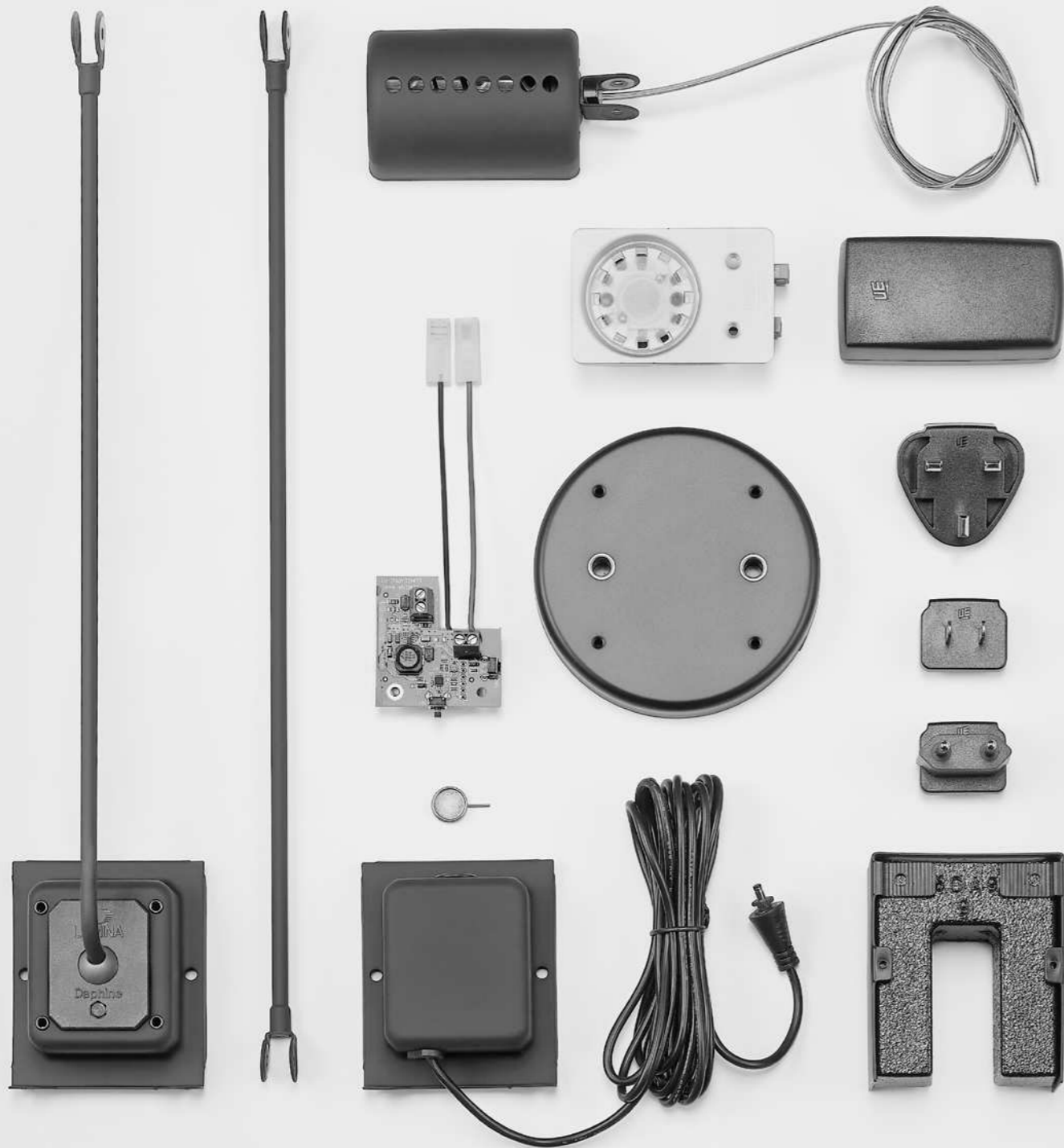
Daphine Parete LED



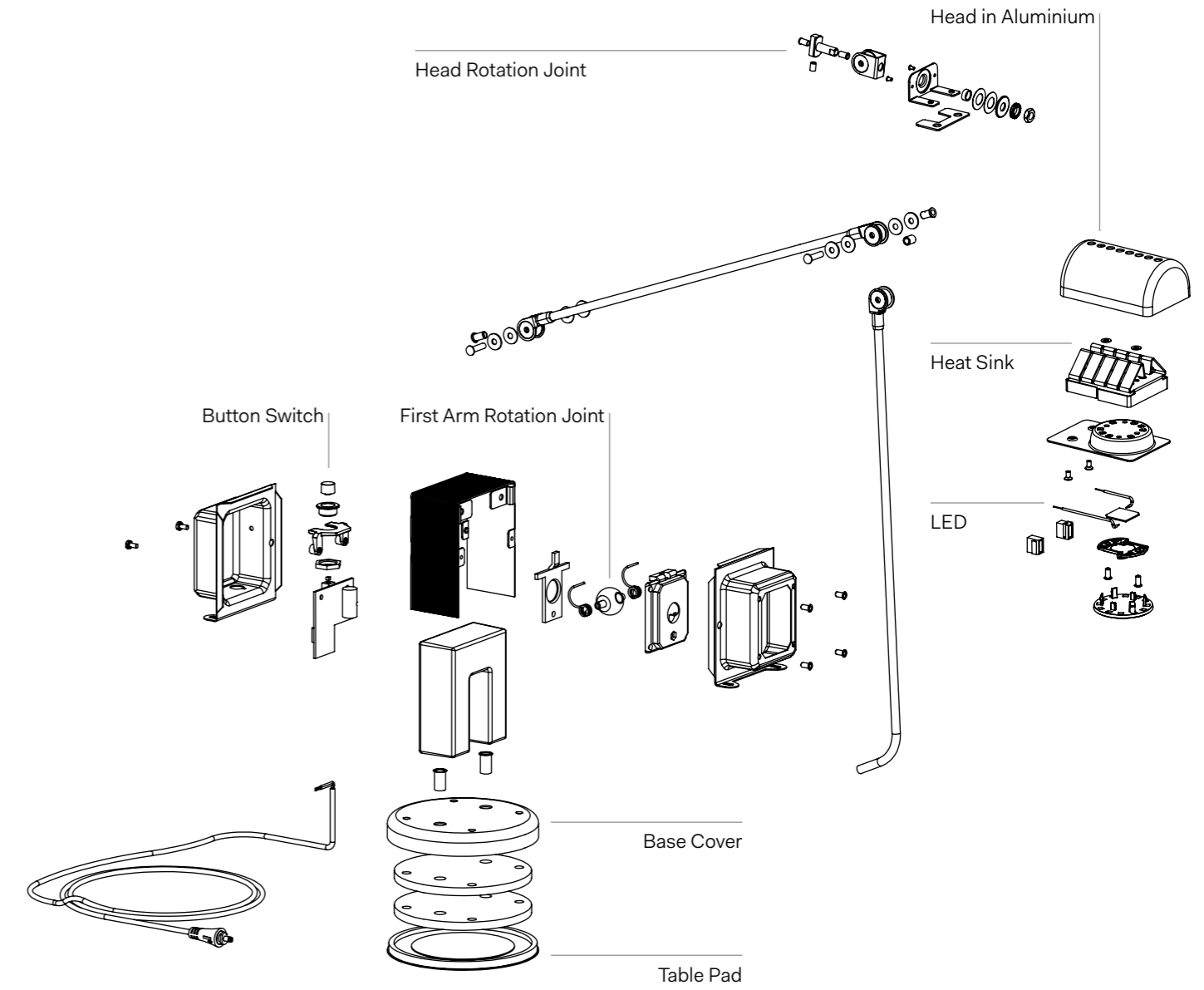
#### Free rotation

Right: free rotation diffuser.  
The Daphine head can turn  
around 360° degrees and  
more in both directions.





## Technical details



**Dot**  
**by Foster + Partners**

The Lumina Dot pendant light began as an idea to create a 'disc of light'. An assembly of two parallel discs connected by a metal stem, its simple form belies an inherent complexity that pushes the boundaries of existing technology. The smaller disc – made of machined aluminium – contains a ring of LEDs that bounce the light off the larger spun aluminium reflector disc. Given the high heat produced by LED lamps, its housing would normally need to accommodate a heat sink to absorb and dissipate the heat, which can be quite bulky. To preserve the minimal form of the lamp, the design uses an innovative heat tube that connects the two discs. The heat pipe transfers the heat from the light engine into the heat sink in the reflector.

Two separate lenses cover the LEDs – a ring shaped lens that focuses the light accurately onto the entire reflector, and a holographic filter lens that gives it a uniform illumination, avoiding shadows from the stem. The result is a minimal pendant light that gives the appearance of a floating disc of light. The reflector has a super-matte white finish and is available in three different sizes from 600 millimetres to 1.1 metres, allowing for varying degrees of enclosure and illumination. Showcasing an innovative approach towards lens technology and temperature transfer the lamp is suitable for use as a single pendant or a chandelier cluster, and comes in a range of different finishes – anodised Black, Red, Brass and Blue.

Dot finishes: 92  
Dot specifications: 100



## Dot

Opposite: Dot 800

Right: chamfer detail





## Dot

Right: ceiling rose

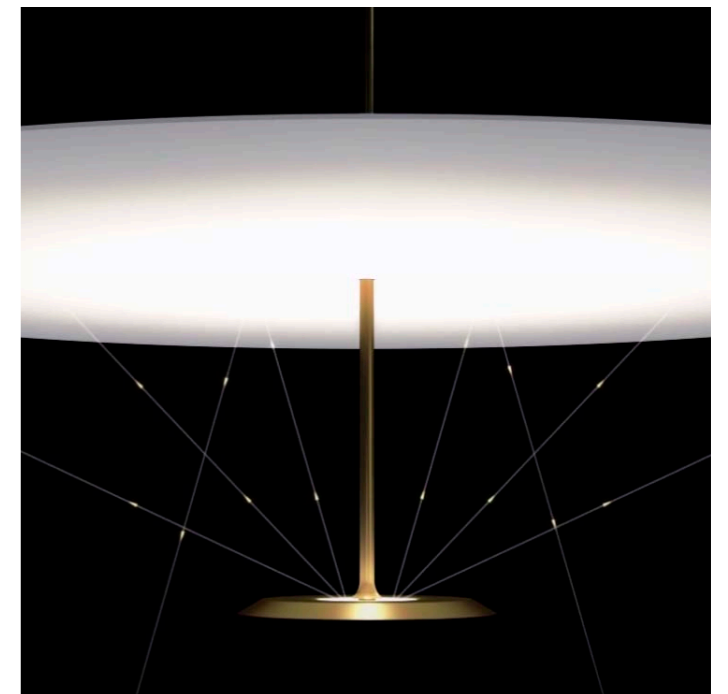
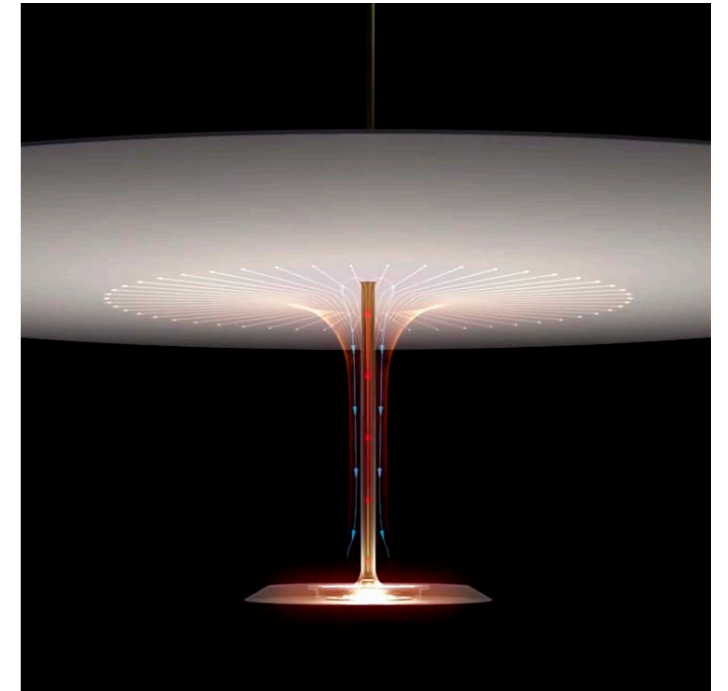


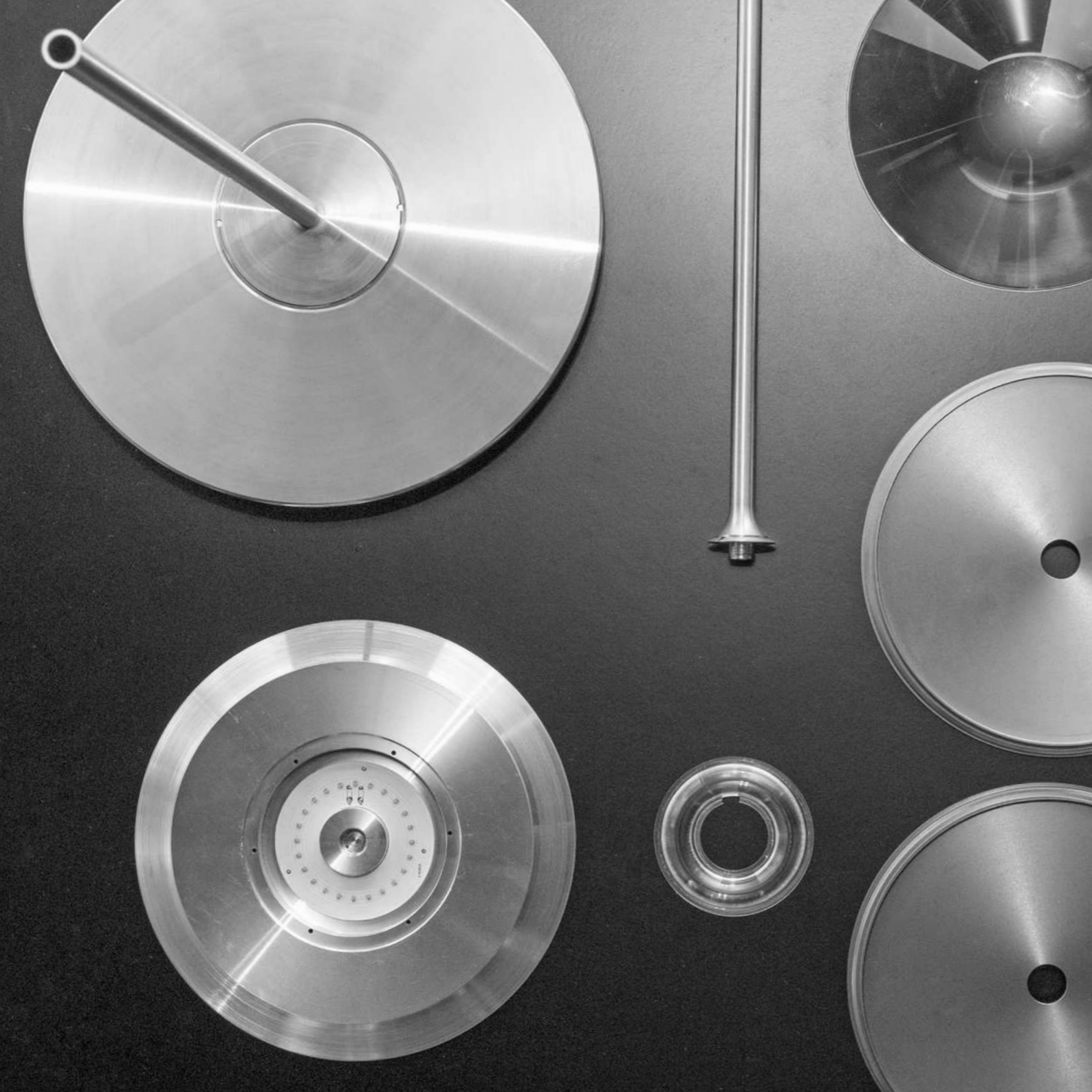


### Dot heat management

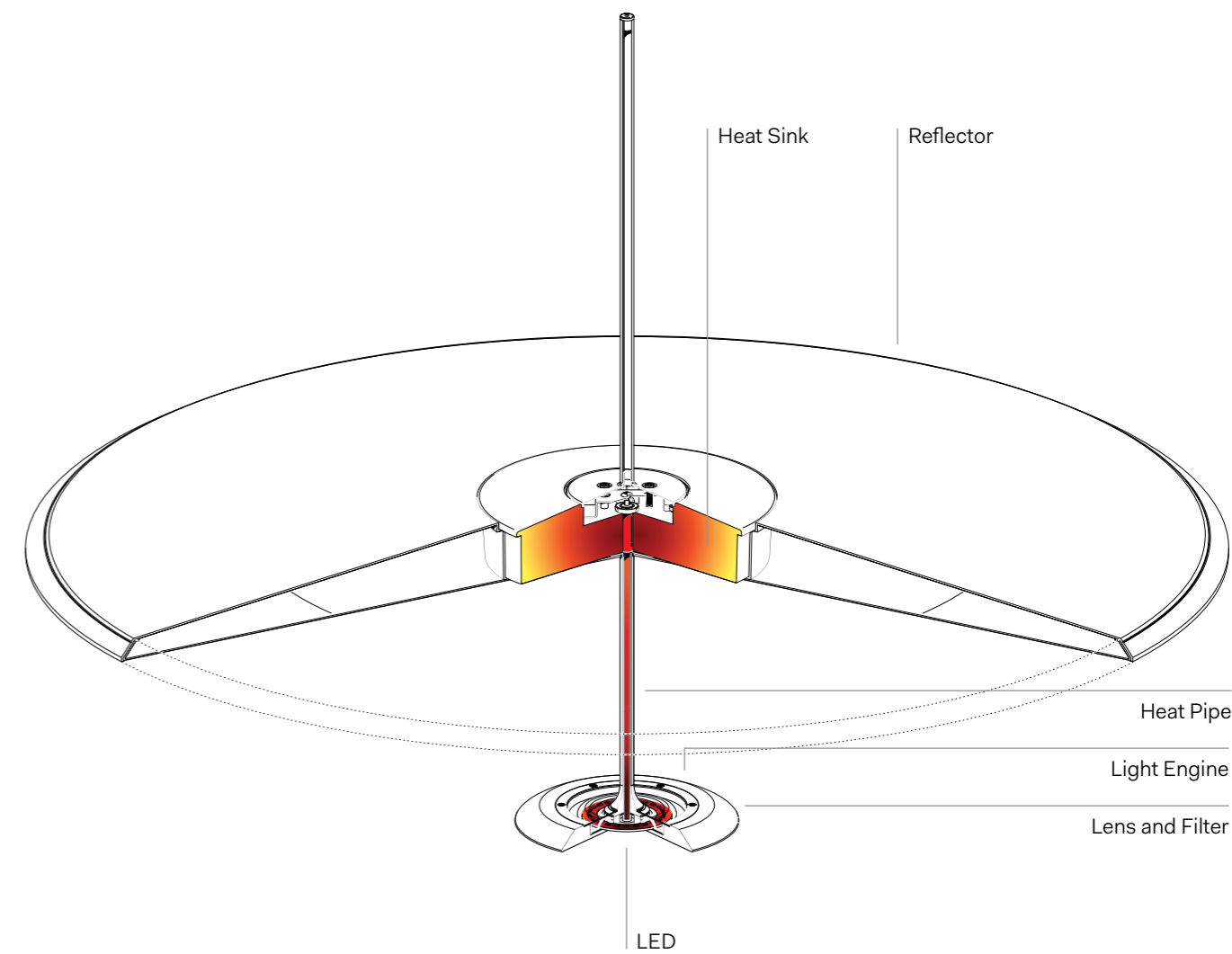
Above: The heat pipe transfers the heat from the light engine into the heat sink, concealed in the reflector.

Below: light distribution





## Technical details



**Eva**  
**by Foster + Partners**

The Lumina Eva is a tabletop indirect up-light that emerged from earlier design iterations of a dining table lamp for an architectural project. The idea was to create a floating cone of light that emanates a warm glow similar to candlelight. The entire assembly sits within a glass tube with a round mechanised aluminium base housing a single LED. The LED projects light upwards onto a reflective cone, held flush with the top of the tube by a seamless mitred joint in the glass. The light passes through two lenses – a flat holographic lens and a larger conical lens that mirrors the form of the reflector above, while accurately focusing the light onto it. At eye level the light source is invisible, and the reflector appears to float above, radiating a soft, warm glow. The lamp is also a tactile object – wrapped around the base is a grooved,

free-moving wheel that works as the dimmer, which uses infrared sensors to achieve precise control over light levels. The lamp – available in anodised Black, Silver, Brass and Bronze finishes – is an exemplar of crafted precision that combines the latest LED technology, with a meticulous understanding of the qualities of light.



## Eva

Opposite: Eva in Brass finish  
Above: primary lens detail  
Below: base detail



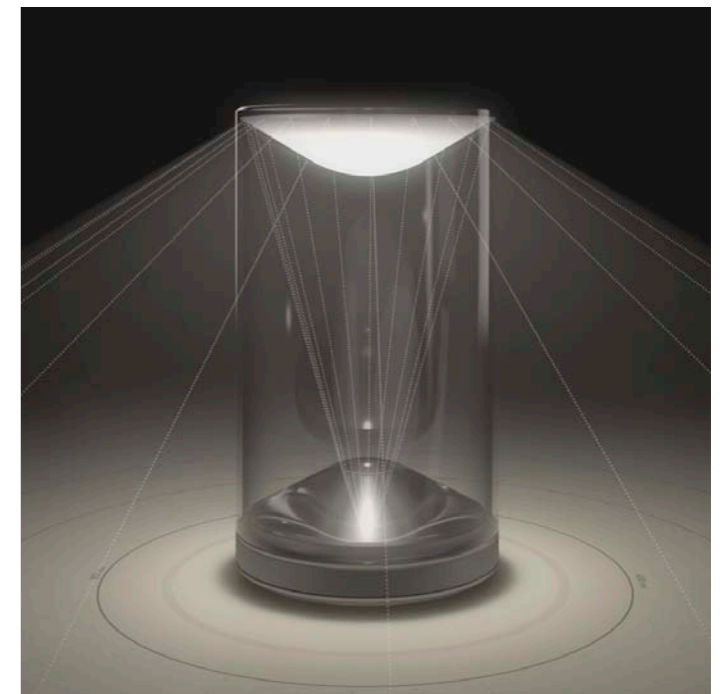


## Eva

Opposite: Eva in Brass finish

Above: light reflector

Below: The light reflector at the top of Eva, reflects the light coming in from the LED situated at the base, at a 70° degree angle.

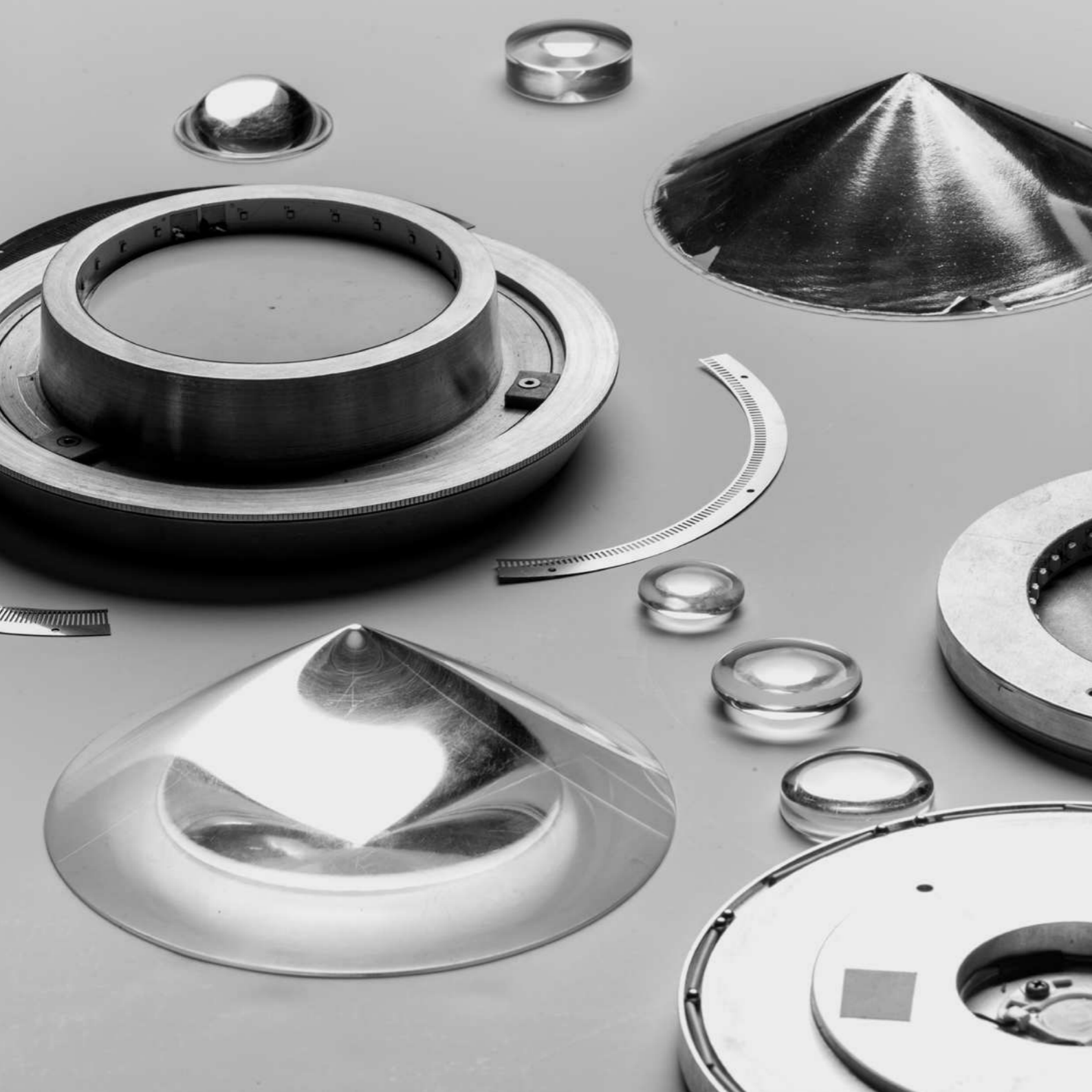




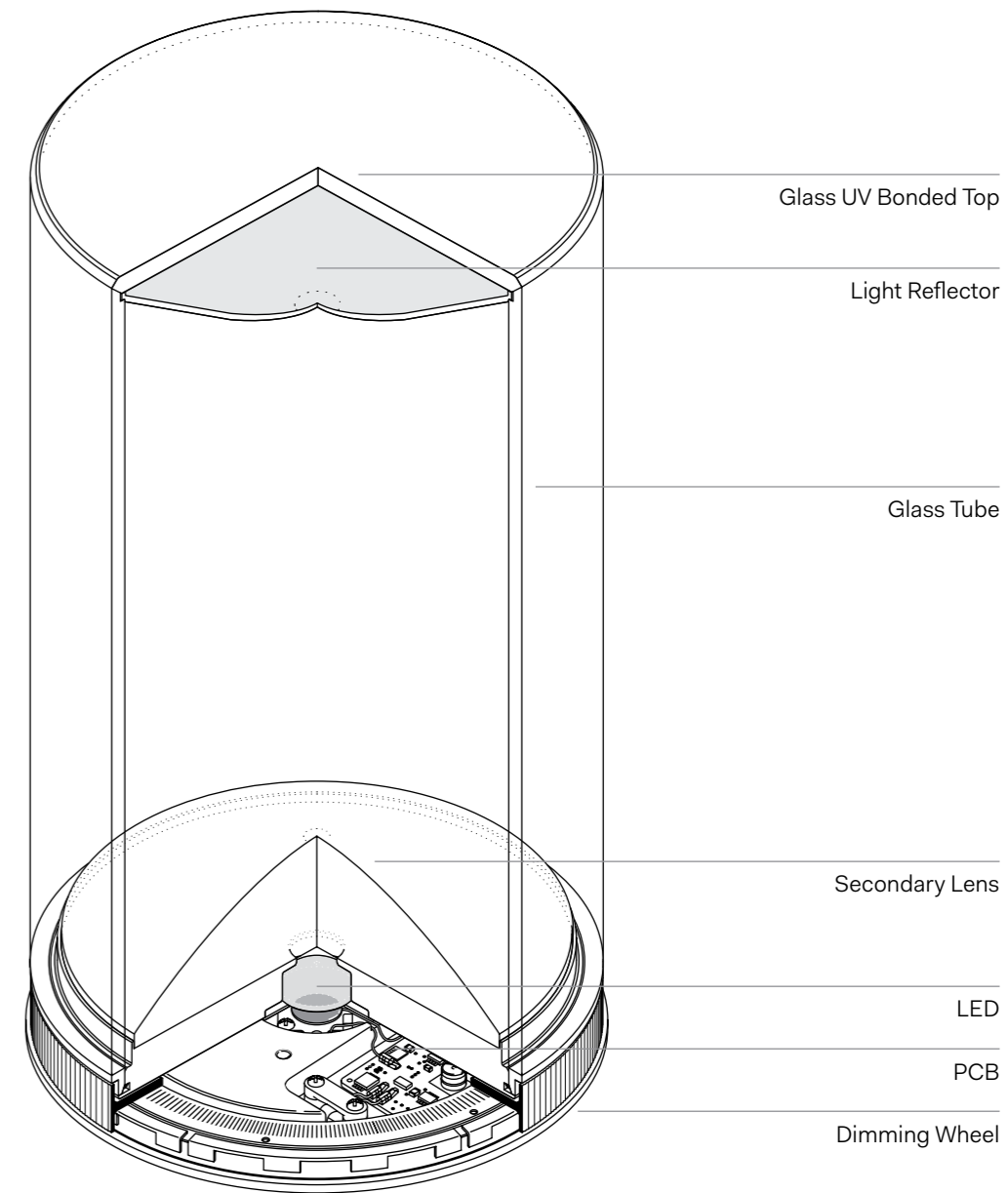
## Dimming

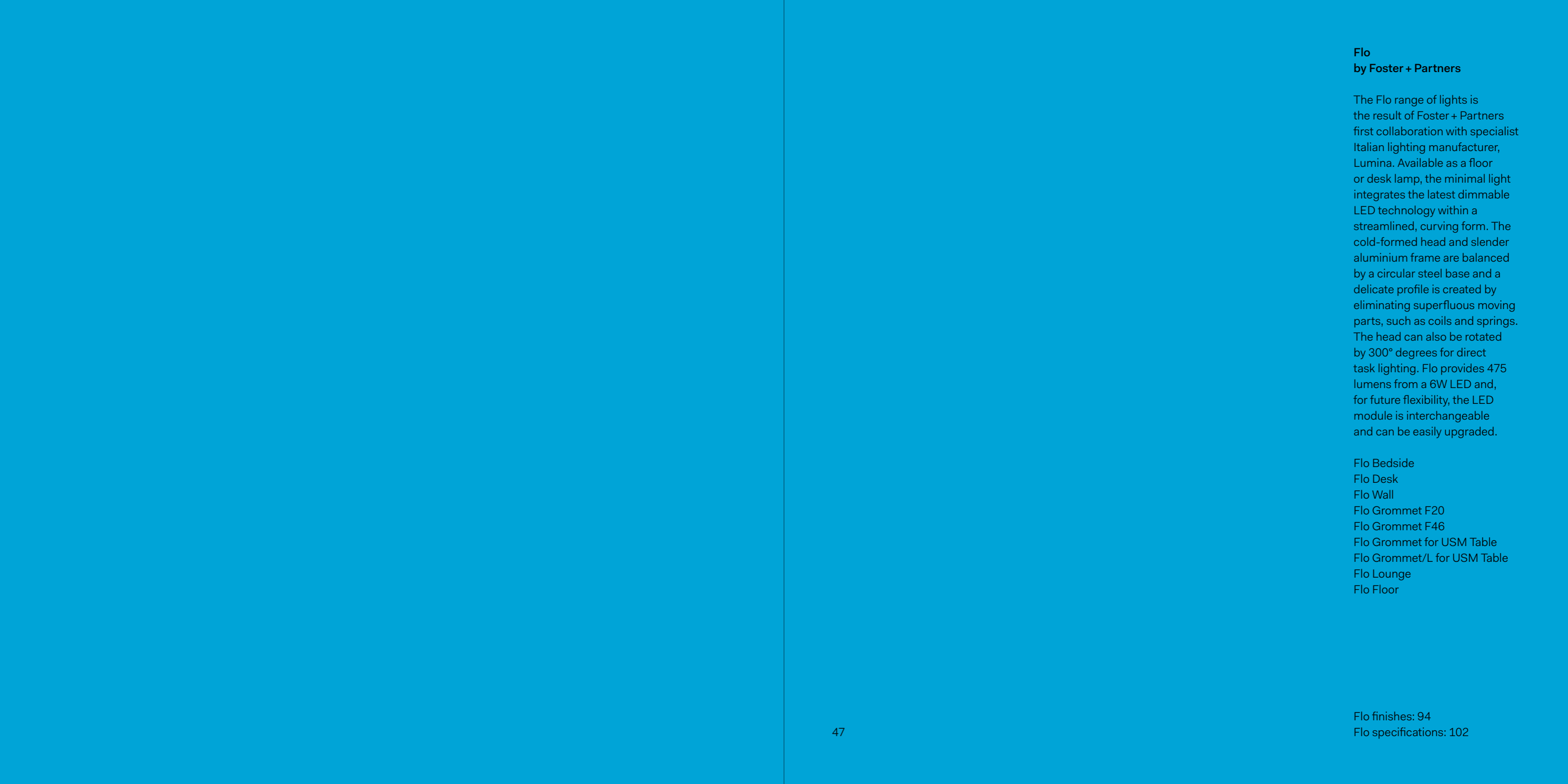
Opposite: Eva in Black finish  
Above: textured dimming ring  
Below: base details





Technical details





**Flo**  
**by Foster + Partners**

The Flo range of lights is the result of Foster + Partners first collaboration with specialist Italian lighting manufacturer, Lumina. Available as a floor or desk lamp, the minimal light integrates the latest dimmable LED technology within a streamlined, curving form. The cold-formed head and slender aluminium frame are balanced by a circular steel base and a delicate profile is created by eliminating superfluous moving parts, such as coils and springs. The head can also be rotated by 300° degrees for direct task lighting. Flo provides 475 lumens from a 6W LED and, for future flexibility, the LED module is interchangeable and can be easily upgraded.

- Flo Bedside
- Flo Desk
- Flo Wall
- Flo Grommet F20
- Flo Grommet F46
- Flo Grommet for USM Table
- Flo Grommet/L for USM Table
- Flo Lounge
- Flo Floor

Flo finishes: 94  
Flo specifications: 102

Flo Bedside



Flo Bedside

Above: Flo head detail



Flo Wall



## Flo Wall

Right: Bracket with integrated spirit level for easy adjustment and installation. Also available as a hidden hard wired option.



Flo Clamp



Flo Floor



Flo Lounge



Flo Lounge

Right: heat sink detail



Flo Desk



Flo Desk

Right: pivoting foot detail





## Flo Grommet

Flo is the ideal light for an integrated solution. Available as a semi recessed or surface mounted. Lumina can study and offer custom made Grommet solutions.

Above: Flo Grommet F20 (Ø20mm drill required) for up to 50mm thickness.  
Below: Flo Grommet F46 (Ø46mm drill required) for 10/13mm thickness.



Flo Grommet for USM Table



Flo Grommet for USM Table

Above: Flo Grommet for USM Table inserted into the desk module as shown opposite.  
Below: Flo Grommet/Large for USM Table inserted into the corner leg.

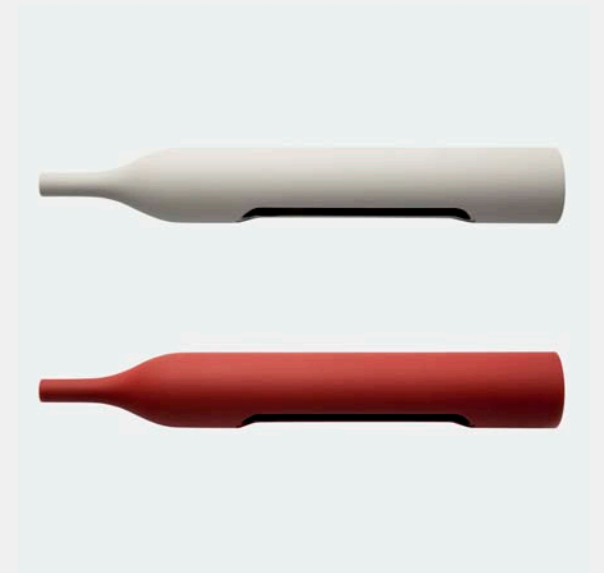


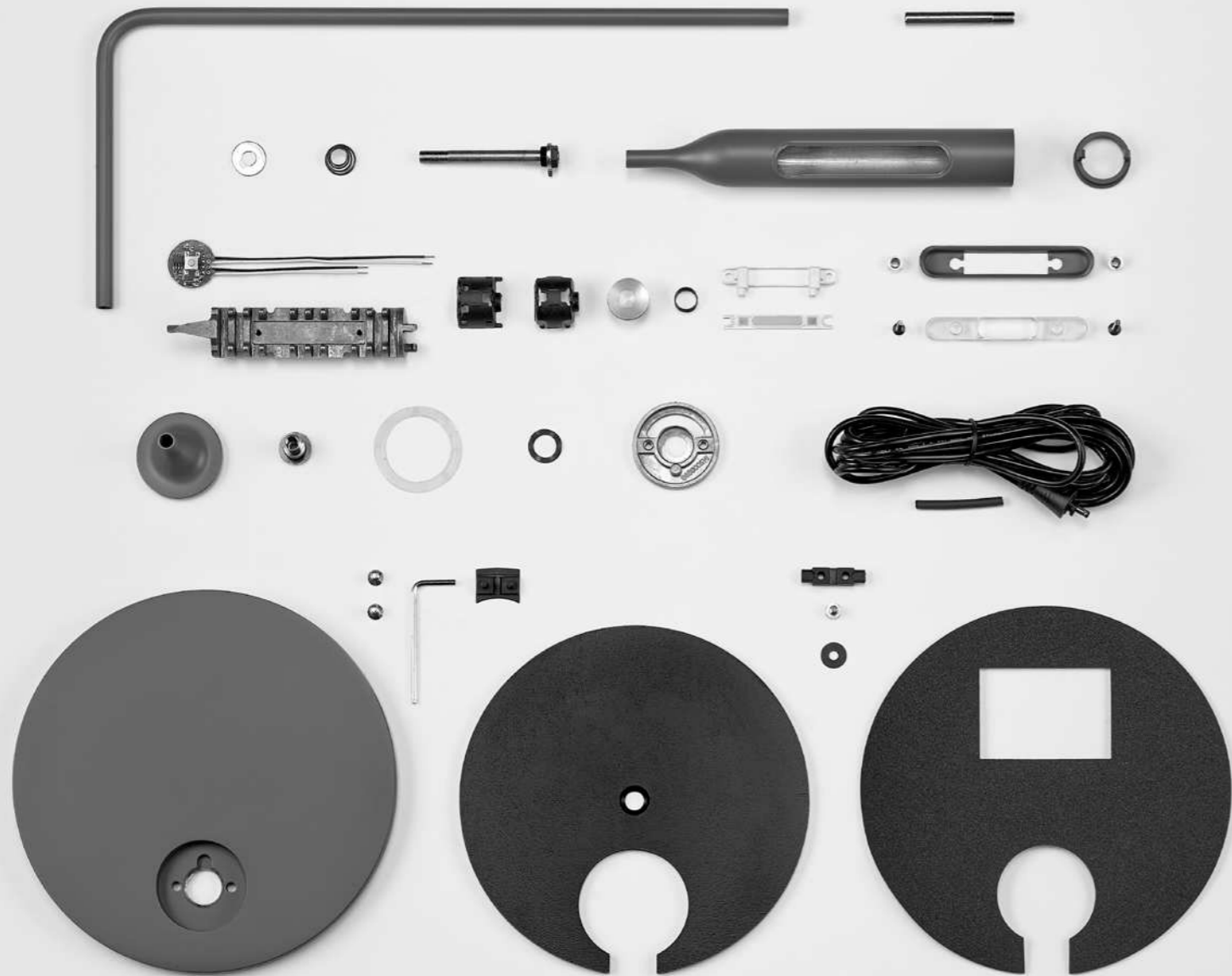


### Bespoke options for Flo

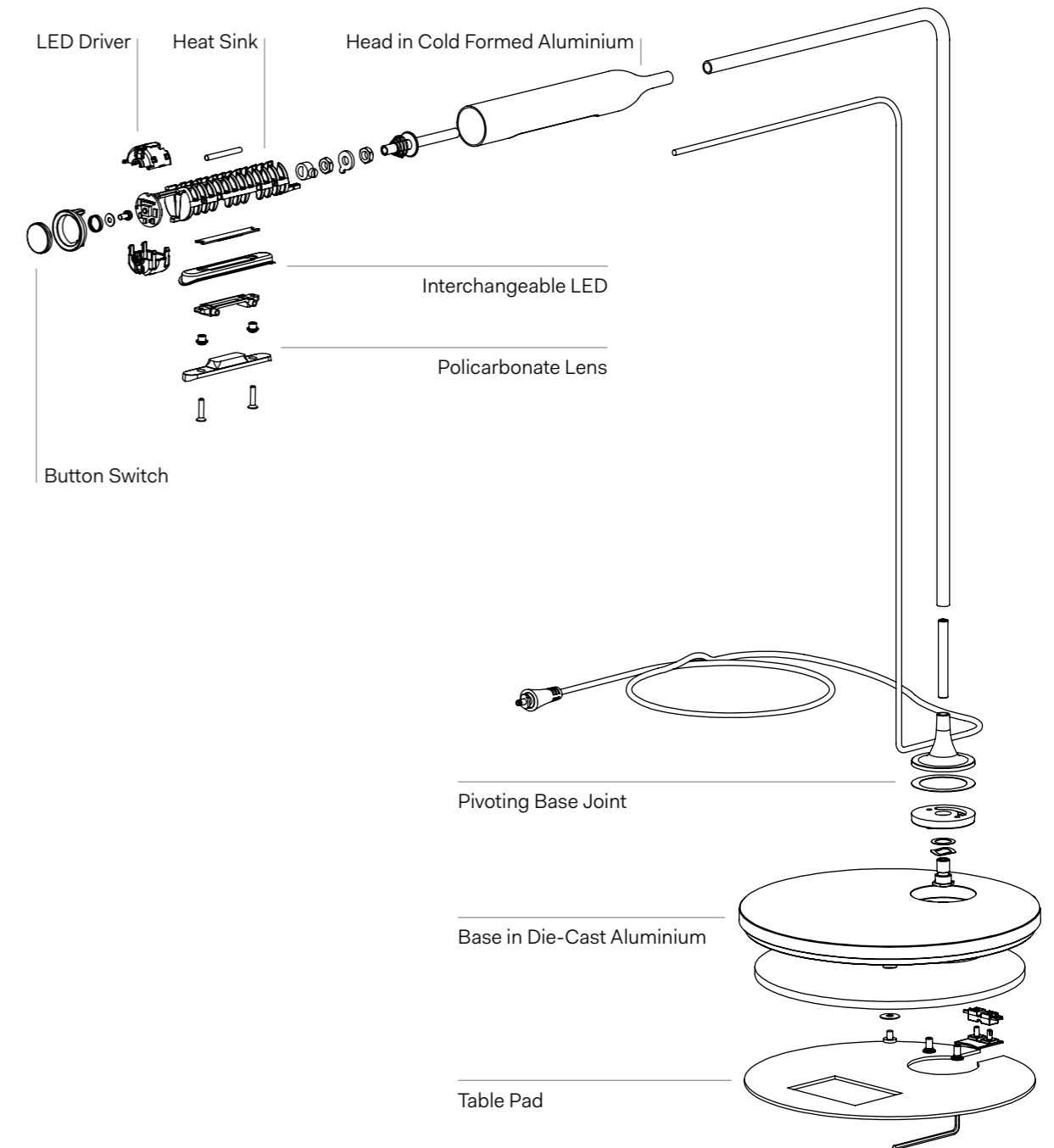
We are able to fulfill various customization requests. For Sorbonne Clignancourt Library, we supplied Flo Grommets with a special square base and custom finishes.

Opposite: Flo bases  
Above: Sorbonne Clignancourt Library, Paris  
Below: custom made finishes grey soft-touch and oxide red soft-touch





## Technical details



**Galileo LED**  
**by Emanuele Ricci**

Galileo is the jewel of the Lumina collection. Galileo's precious crystal shade is the outcome of an extremely precise process of glass making. The refraction quality of the optical glass conveys the maximum possible brilliance of light through the entire shade. Available now with LED source, this new version of Galileo is even more elegant and its light even purer than the earlier halogen series. Galileo is dimmable for energy saving. Galileo LED energy consumption equals to 18W, 8W for Galileo mini LED. A decentralised mount is always included.

Galileo LED  
Galileo Mini LED

Galileo LED



Galileo LED

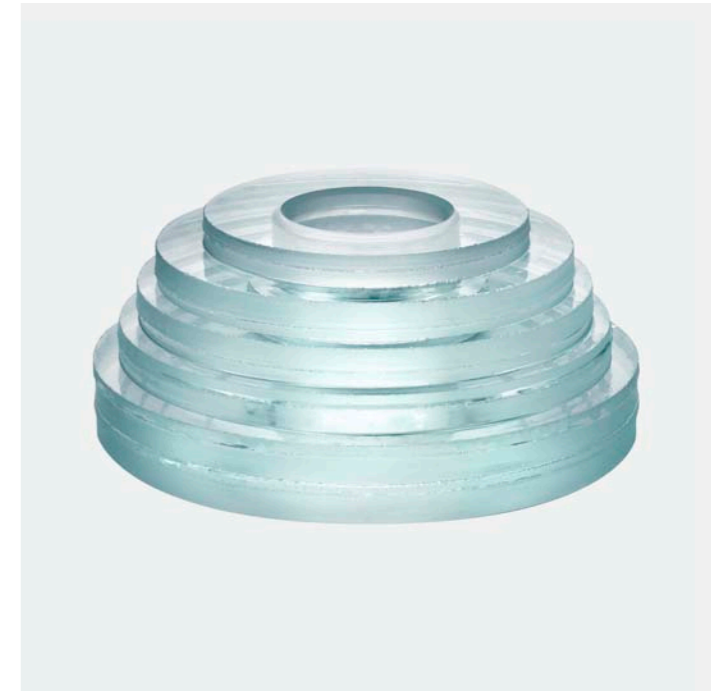
Right: LED light engine





#### Galileo LED Manufacturing

Above: manufacturing Galileo, first step, shaping and gluing  
Below: manufacturing Galileo, final step, turning and polishing.  
Galileo's precious body is handmade by master craftsmen. The thick extra-clear sheets of crystal are milled, ground, and pasted to obtain a convex lens which holds, reflects, and conducts the rays of light.

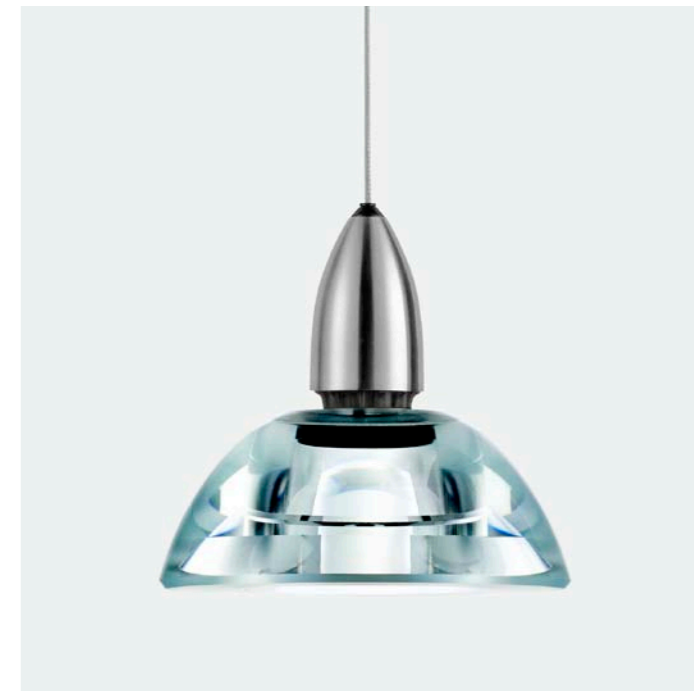




### Galileo LED Sizes

Galileo is available in two versions Standard (Ø20cm) and Mini (Ø12cm).

Above: Mini Ø12cm with a single lead cord  
Below: Standard Ø20cm with separate cords for hanging and power

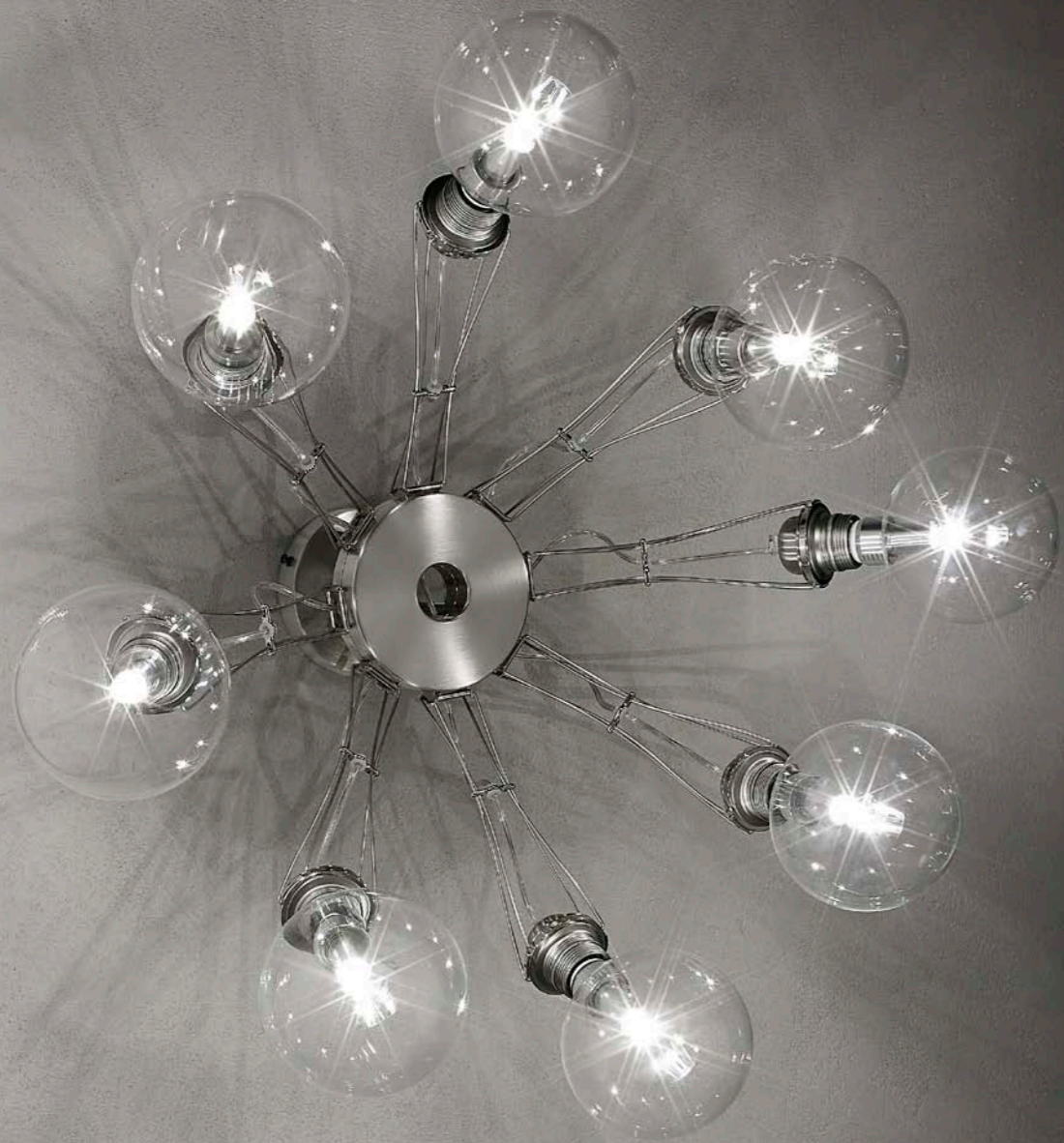


**Matrix**  
**by Yaacov Kaufman**

Kaufman's research on the friction mechanism gave birth to a wide range of light fittings with sideways adjustable arms in flexible steel rods. The Matrix series offers wall, ceiling and suspension lights, with one, four, eight or sixteen arms, with a lamp-holder E27, suitable for LED bulbs. Wall fixtures are also available with an individual switch.

- Matrix Doppia
- Matrix Otto
- Matrix Quattro
- Matrix Mono
- Matrix Otto P
- Matrix Quattro P

Matrix Otto P



Matrix Quattro P

Right: wall fixture for  
Matrix Quattro P



Matrix Otto



Matrix Doppia



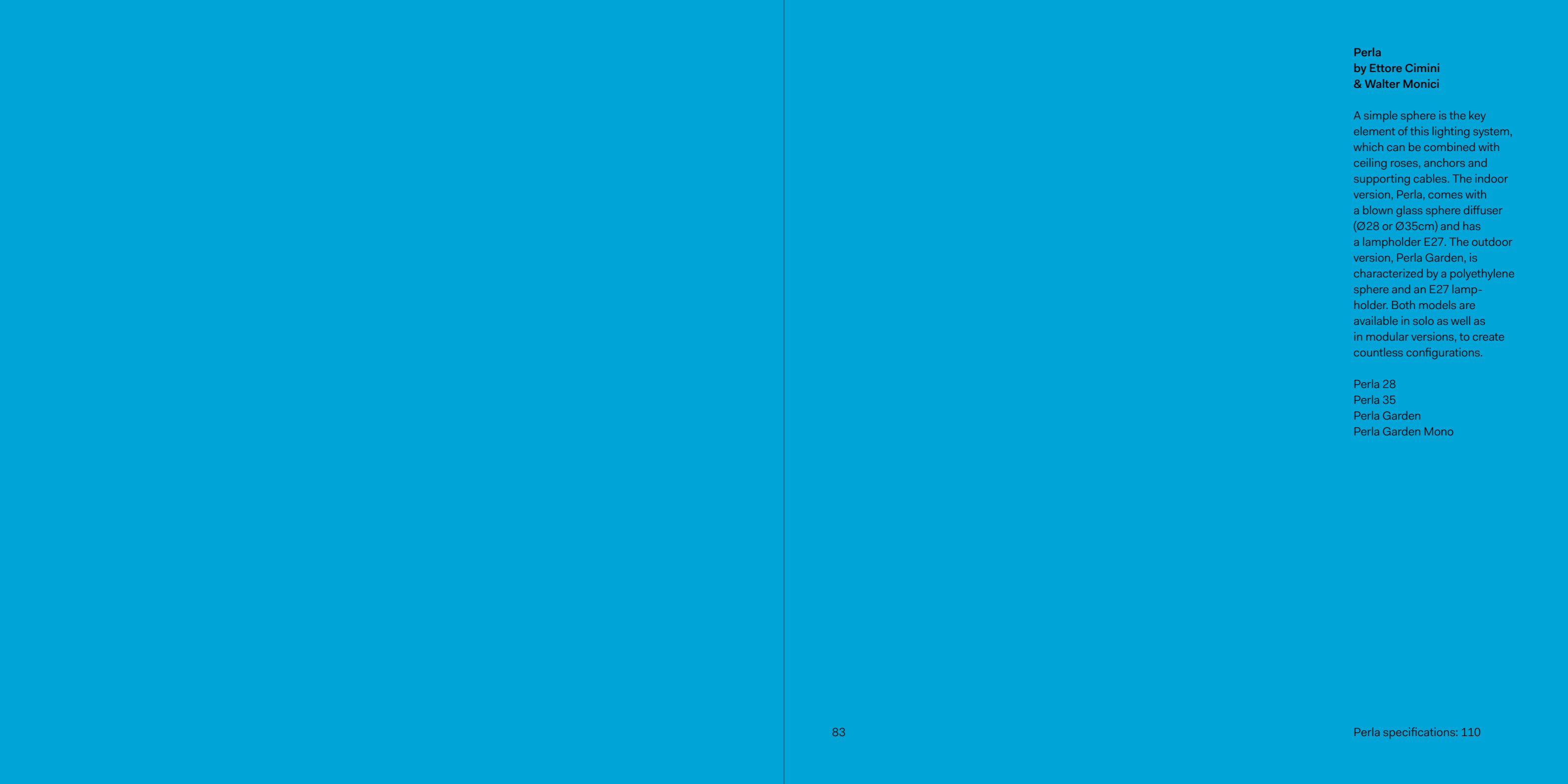
Matrix Mono



Matrix Mono

Above: switch version  
Below: socket

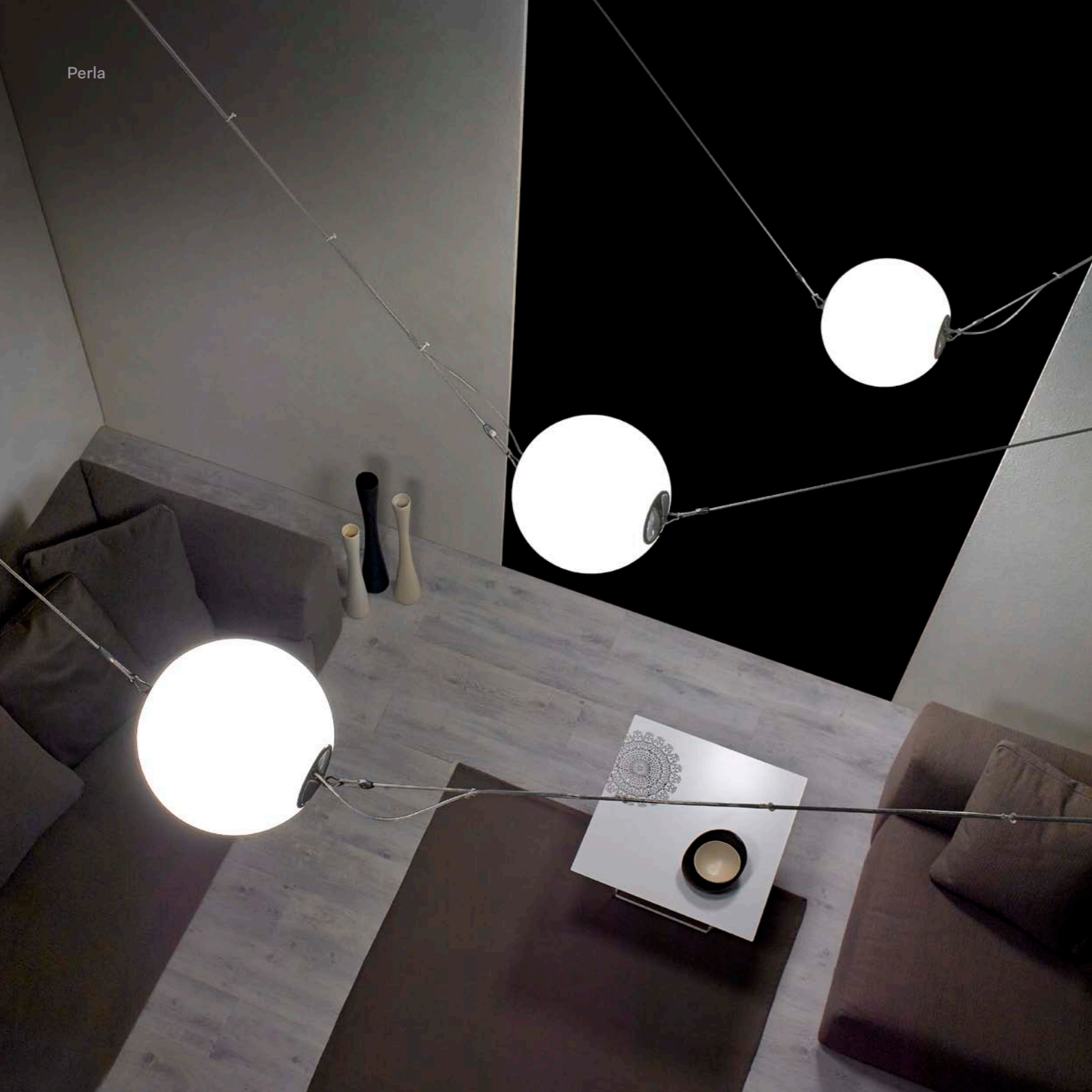




**Perla**  
**by Ettore Cimini**  
**& Walter Monici**

A simple sphere is the key element of this lighting system, which can be combined with ceiling roses, anchors and supporting cables. The indoor version, Perla, comes with a blown glass sphere diffuser (Ø28 or Ø35cm) and has a lampholder E27. The outdoor version, Perla Garden, is characterized by a polyethylene sphere and an E27 lamp-holder. Both models are available in solo as well as in modular versions, to create countless configurations.

- Perla 28
- Perla 35
- Perla Garden
- Perla Garden Mono



## Perla

Above: die-cast aluminium cap  
Below: internal frame, patented  
by Lumina



Perla Garden



Perla Garden

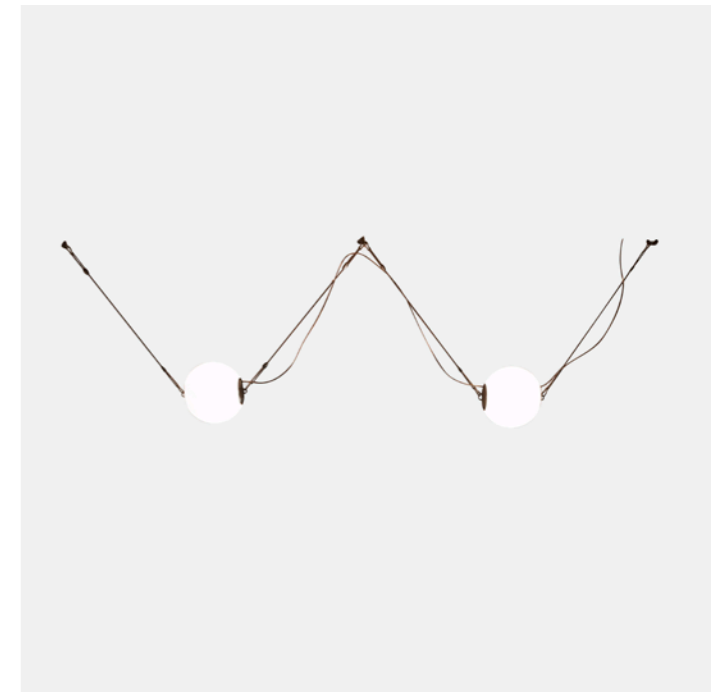
Above: white coated die-cast  
aluminium cap, IP65  
Below: stainless steel hitches





### Modular System

Perla is a highly personalized lighting system. Its internal frame is designed to hold up to 50kg's worth of tension (Lumina's patent), and thus can be mounted both horizontally and vertically. In particular, it can be mounted in such a way that the fitting is decentralised from its power connection, this being its original feature. Thanks to its simple electric connection other light fittings can be linked to it.



**Finishes**

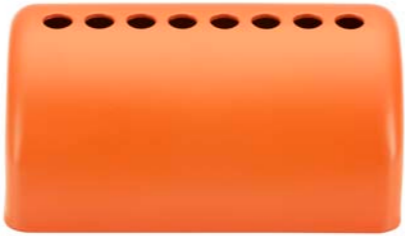
Please contact us to learn more about our custom and soft touch finish options.

Daphine finishes

02op Matt White



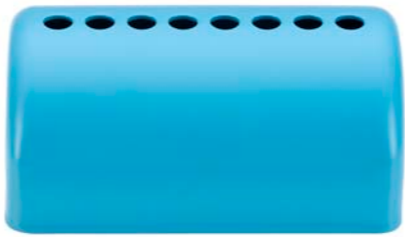
26op Matt Orange



03op Matt Red



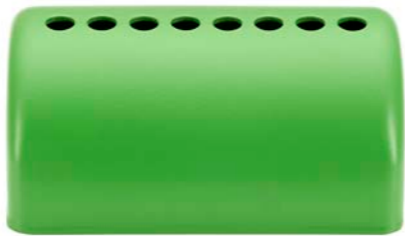
27op Matt Cyan



05op Matt Yellow



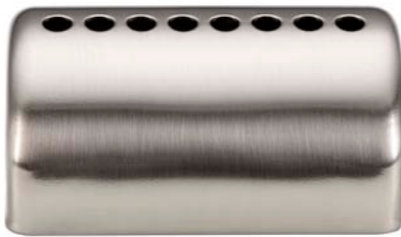
28op Matt Green



29mt Bronze Metal Paint



44 Brushed Nickel



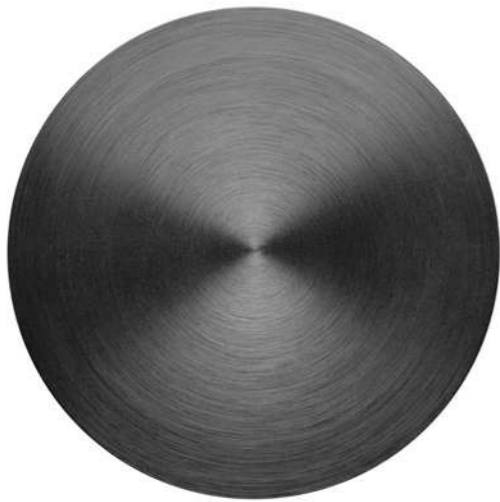
01st Black Soft-touch



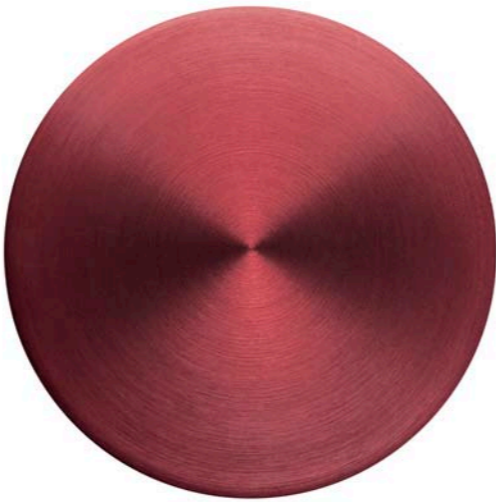
Soft touch option available in custom colours.  
Please contact us for more details.

Dot finishes

01XO Anodised Black



03XO Anodised Red



50XO Anodised Brass



51XO Anodised Blue



Eva finishes

01XO Anodised Black



29XO Anodised Bronze



50XO Anodised Brass



55XO Anodised Silver



Flo finishes

02op Matt White



27op Matt Cyan



03op Matt Red



28op Matt Green



05op Matt Yellow



26op Matt Orange



29 Bronze Metal Paint



32 Gunmetal



44 Brushed Nickel



01st Black Soft-touch



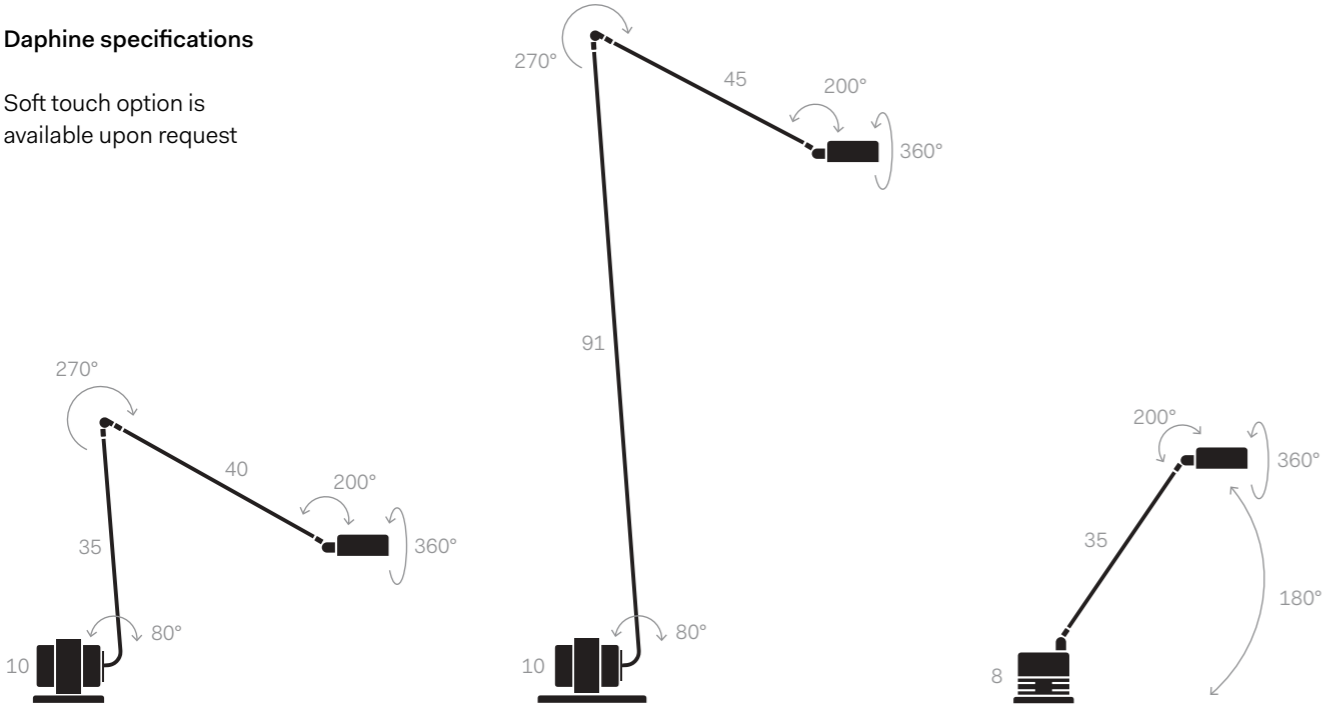
Soft touch option available in custom colours  
(please get in touch for more details)

**Specifications**

Please get in touch to learn more about bespoke product customisation options. We are happy to work with our clients to deliver bespoke engineering and design solutions.

Daphne specifications

Soft touch option is available upon request



Daphine LED  
Dimmer + Two Step Switch

Source  
1 × 8W LED  
3000K / 840lm  
On request 2700K is available

Code  
01L

Certification  
CE

- Finishes
- |      |      |
|------|------|
| 01st | 27op |
| 02op | 28op |
| 03op | 29mt |
| 05op | 44   |
| 26op |      |

Daphine Terra LED  
Dimmer + Two Step Switch

Source  
1 × 8W LED  
3000K / 840lm  
On request 2700K is available

Code  
02L

Certification  
CE

- Finishes
- |      |      |
|------|------|
| 01st | 27op |
| 02op | 28op |
| 03op | 29mt |
| 05op | 44   |
| 26op |      |

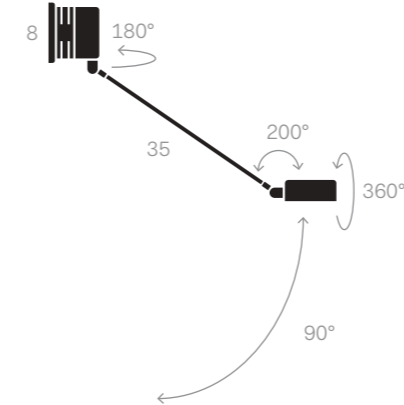
Daphinette LED  
On/Off Switch

Source  
1 × 4W LED  
3000K / 320lm

Code  
09L

Certification  
CE

- Finishes
- |      |      |
|------|------|
| 01st | 27op |
| 02op | 28op |
| 03op | 29mt |
| 05op | 44   |
| 26op |      |



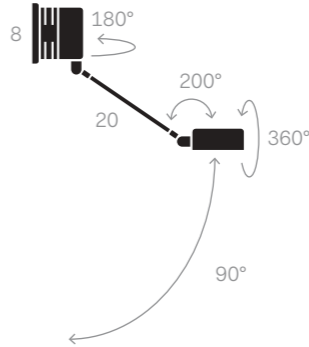
Daphine Parete 35 LED  
On/Off Switch

Source  
1 × 4W LED  
3000K / 320lm

Code  
05L

Certification  
CE

- Finishes
- |      |      |
|------|------|
| 01st | 27op |
| 02op | 28op |
| 03op | 29mt |
| 05op | 44   |
| 26op |      |



Daphine Parete 20 LED  
On/Off Switch

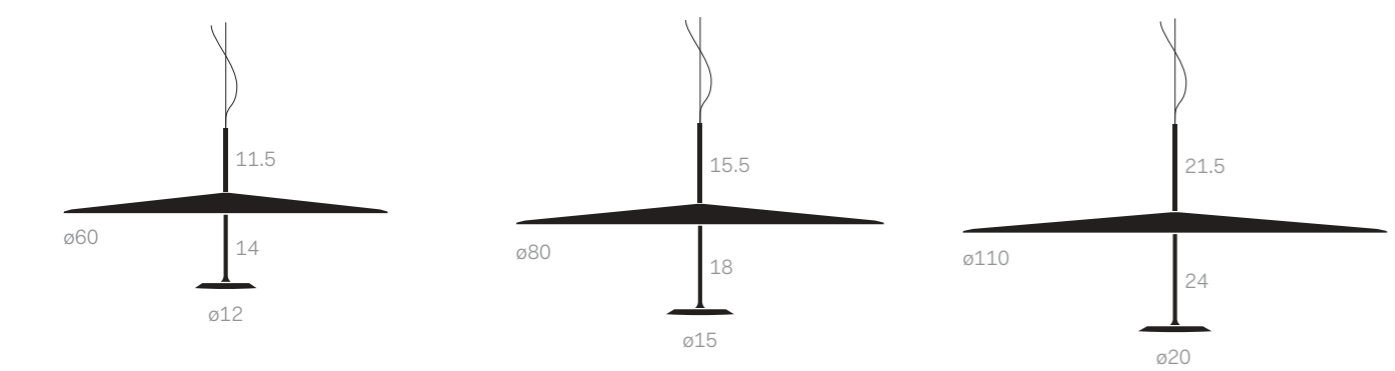
Source  
1 × 4W LED  
3000K / 320lm

Code  
06L

Certification  
CE

- Finishes
- |      |      |
|------|------|
| 01st | 27op |
| 02op | 28op |
| 03op | 29mt |
| 05op | 44   |
| 26op |      |

Dot specifications



Dot 600  
Dimmable

Source  
20W LED  
3000K / 2350lm

Code  
130

Certification  
CE

Finishes  
01XO  
03XO  
50XO  
51XO

Dot 800  
Dimmable

Source  
40W LED  
3000K / 3250lm

Code  
131

Certification  
CE

Finishes  
01XO  
03XO  
50XO  
51XO

Dot 1100  
Dimmable

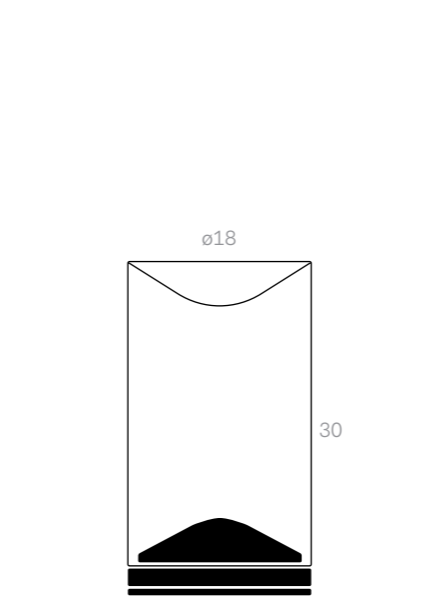
Source  
60W LED  
3000K / 4750lm

Code  
132

Certification  
CE

Finishes  
01XO  
03XO  
50XO  
51XO

Eva specifications



Eva  
Dimmer

Source  
1 × 14W LED  
2700K / 1500lm  
On request 3000K LED is available

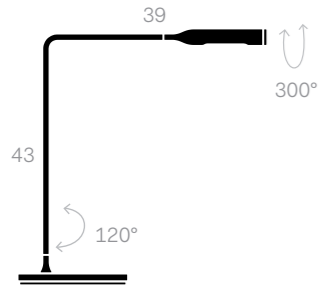
Code  
140

Certification  
CE

Finishes  
01XO  
29XO  
50XO  
55XO

Flo specifications

Soft touch option is available upon request



Flo Desk  
Two Step Switch

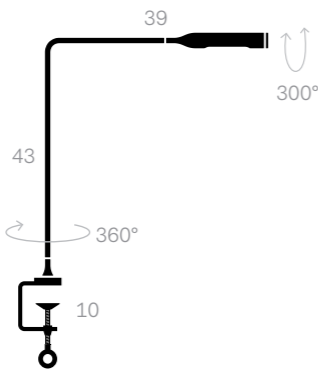
Source  
1 × 6W LED  
3000K / 475lm  
On request 2700K is available

Code  
940

Certification  
CE

Finishes

01st	27op
02op	28op
03op	29mt
05op	32
26op	44



Flo Clamp  
Two Step Switch

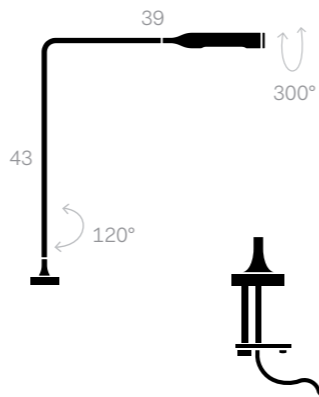
Source  
1 × 6W LED  
3000K / 475lm  
On request 2700K is available

Code  
955

Certification  
CE

Finishes

01st	27op
02op	28op
03op	29mt
05op	32
26op	44



Flo Grommet F20  
Two Step Switch

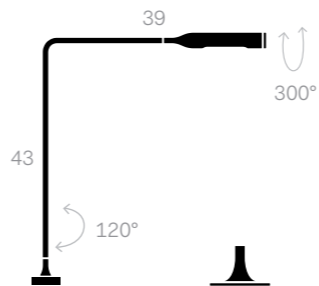
Source  
1 × 6W LED  
3000K / 475lm  
On request 2700K is available

Code  
962

Certification  
CE

Finishes

01st	27op
02op	28op
03op	29mt
05op	32
26op	44



Flo Grommet F46  
Two Step Switch

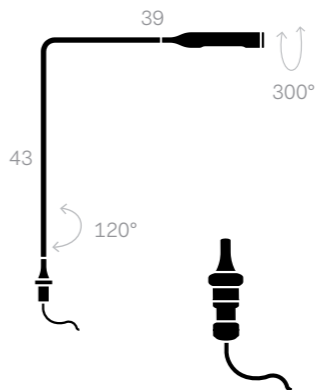
Source  
1 × 6W LED  
3000K / 475lm  
On request 2700K is available

Code  
960

Certification  
CE

Finishes

01st	27op
02op	28op
03op	29mt
05op	32
26op	44



Flo Grommet for USM Table  
Two Step Switch

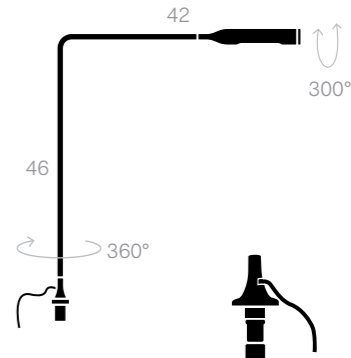
Source  
1 × 6W LED  
3000K / 475lm  
On request 2700K is available

Code  
954

Certification  
CE

Finishes

01st	27op
02op	28op
03op	29mt
05op	32
26op	44



Flo Grommet / Large for USM Table  
Two Step Switch

Source  
1 × 6W LED  
3000K / 475lm  
On request 2700K is available

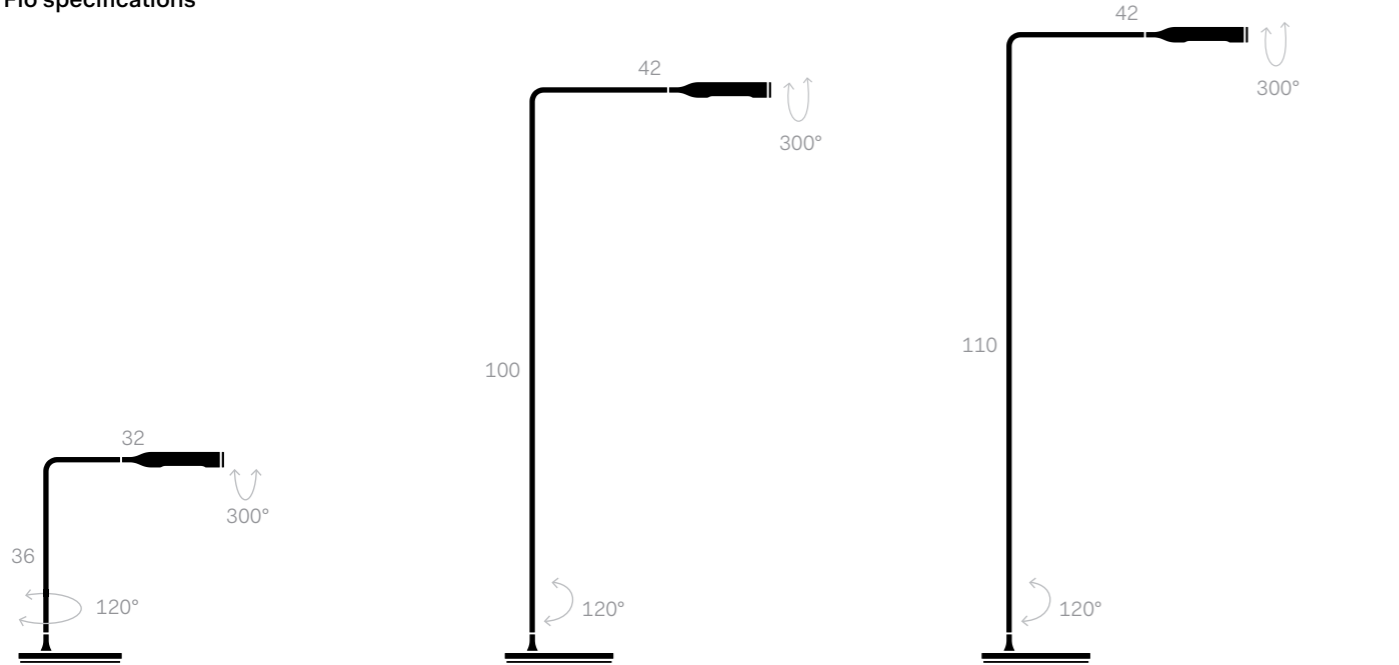
Code  
956

Certification  
CE

Finishes

01st	27op
02op	28op
03op	29mt
05op	32
26op	44

Flo specifications



Flo Bedside  
Two Step Switch

Source  
1 × 3W LED  
3000K / 250lm  
On request 2700K is available

Code  
950

Certification  
CE

- Finishes
- |      |      |
|------|------|
| 01st | 27op |
| 02op | 28op |
| 03op | 29mt |
| 05op | 32   |
| 26op | 44   |

Flo Lounge  
Two Step Switch

Source  
1 × 3W LED  
3000K / 250lm  
On request 2700K is available

Code  
971

Certification  
CE

- Finishes
- |      |      |
|------|------|
| 01st | 27op |
| 02op | 28op |
| 03op | 29mt |
| 05op | 32   |
| 26op | 44   |

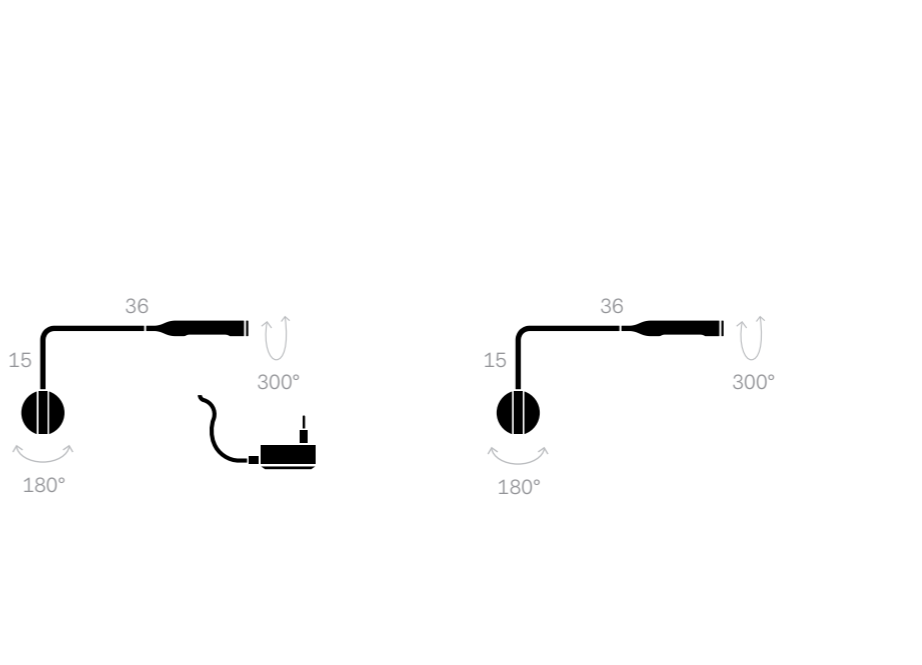
Flo Floor  
Two Step Switch

Source  
1 × 6W LED  
3000K / 475lm  
On request 2700K is available

Code  
945

Certification  
CE

- Finishes
- |      |      |
|------|------|
| 01st | 27op |
| 02op | 28op |
| 03op | 29mt |
| 05op | 32   |
| 26op | 44   |



Flo Wall  
Two Step Switch

Source  
1 × 3W LED  
3000K / 250lm  
On request 2700K is available

Code  
975

Certification  
CE

- Finishes
- |      |      |
|------|------|
| 01st | 27op |
| 02op | 28op |
| 03op | 29mt |
| 05op | 32   |
| 26op | 44   |

Flo Wall M  
Two Step Switch

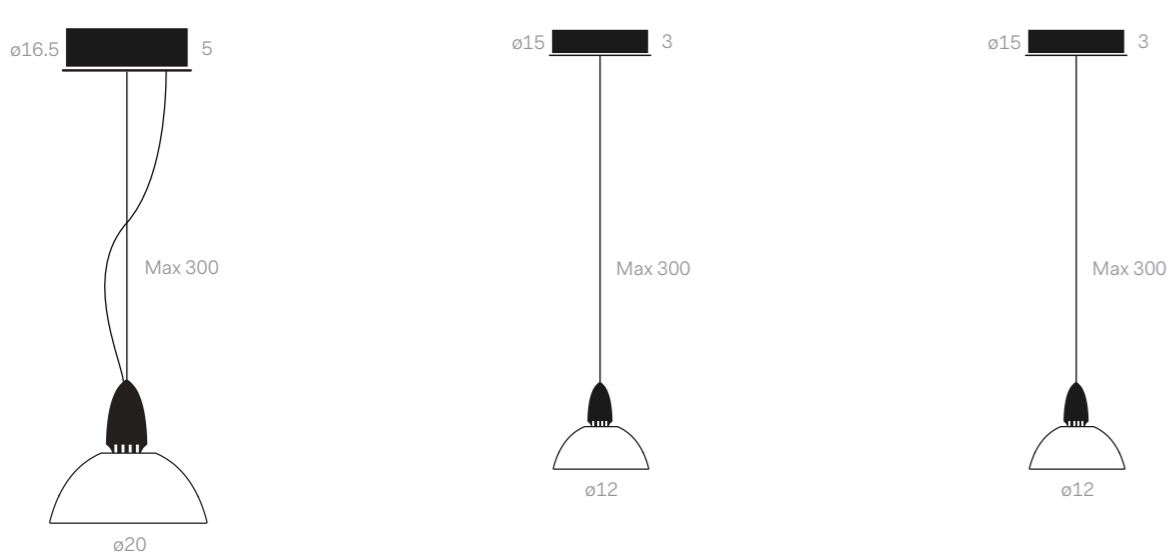
Source  
1 × 3W LED  
3000K / 250lm  
On request 2700K is available

Code  
976

Certification  
CE

- Finishes
- |      |      |
|------|------|
| 01st | 27op |
| 02op | 28op |
| 03op | 29mt |
| 05op | 32   |
| 26op | 44   |

Galileo specifications



Galileo LED  
Dimmable  
0–10V or push button

Source  
1 × 18W LED  
3000K / 1800lm  
On request 2700K and  
5000K LED is available

Code  
380LD

Certification  
CE

Finishes  
44

Notes  
Decentral mount included

Galileo LED Mini  
On/Off Switch

Source  
1 × 8W LED  
3000K / 780lm  
On request 2700K and  
5000K LED is available

Code  
383L

Certification  
CE

Finishes  
44

Notes  
Decentral mount included

Galileo LED Mini  
Dimmable  
0–10V or push button

Source  
1 × 8W LED  
3000K / 780lm  
On request 2700K and  
5000KLED is available

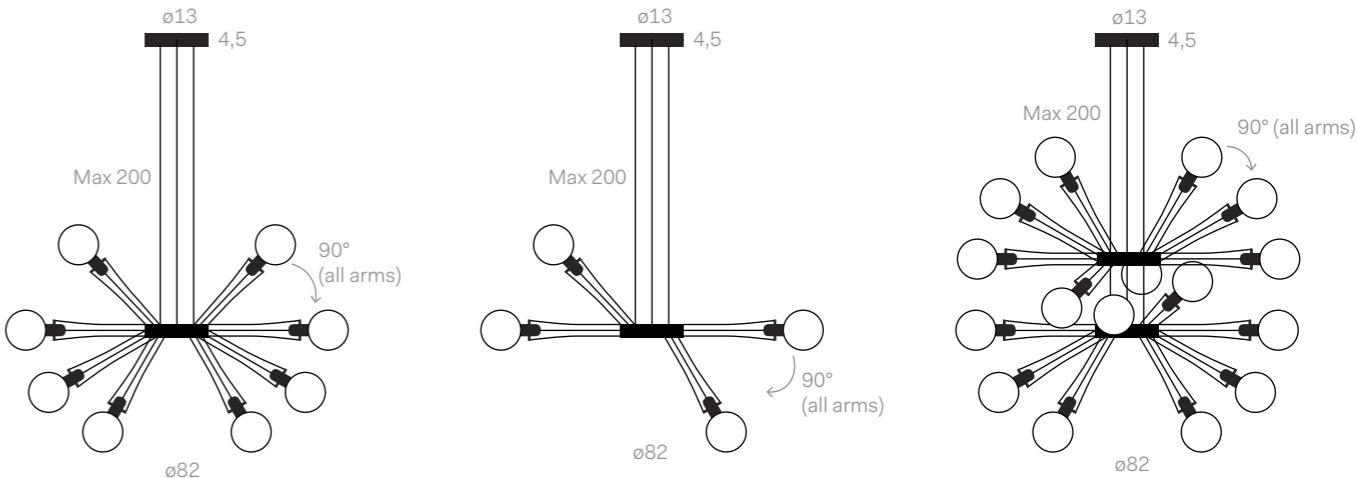
Code  
383LD

Certification  
CE

Finishes  
44

Notes  
Decentral mount included

Matrix specifications



Matrix Otto  
Dimmable  
With dimmable bulbs only

Source  
8 × Max 60W  
E27

Code  
385

Certification  
CE

Finishes  
01st  
44

Notes

Matrix Quattro  
Dimmable  
With dimmable bulbs only

Source  
4 × Max 60W  
E27

Code  
386

Certification  
CE

Finishes  
01st  
44

Notes

Matrix Doppia  
Dimmable  
With dimmable bulbs only

Source  
16 × Max 60W  
E27

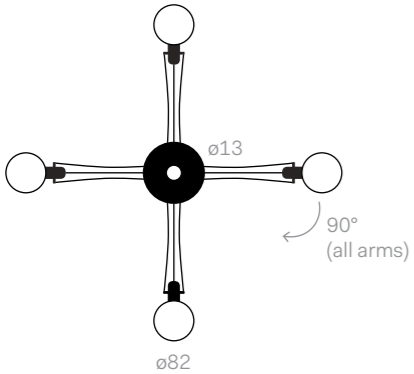
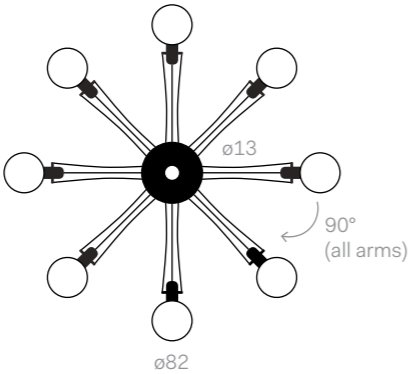
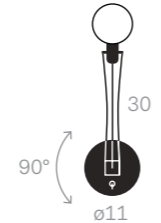
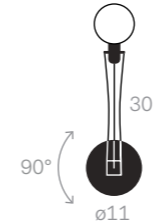
Code  
387

Certification  
CE

Finishes  
01st  
44

Notes

Matrix specifications

			
<div>Matrix Quattro P</div> <div>Dimmable</div> <div>With dimmable bulbs only</div> <div>Source</div> <div>4 × Max 60W</div> <div>E27</div> <div>Code</div> <div>388</div> <div>Certification</div> <div>CE</div> <div>Finishes</div> <div><div></div> 01st</div> <div><div></div> 44</div>	<div>Matrix Otto P</div> <div>Dimmable</div> <div>With dimmable bulbs only</div> <div>Source</div> <div>8 × Max 60W</div> <div>E27</div> <div>Code</div> <div>389</div> <div>Certification</div> <div>CE</div> <div>Finishes</div> <div><div></div> 01st</div> <div><div></div> 44</div>	<div>Matrix Mono/I</div> <div>On/Off Switch</div> <div>Source</div> <div>Max 60W</div> <div>E27</div> <div>Code</div> <div>396</div> <div>Certification</div> <div>CE</div> <div>Finishes</div> <div><div></div> 01st</div> <div><div></div> 44</div>	<div>Matrix Mono</div> <div>Dimmable</div> <div>With dimmable bulbs only</div> <div>Source</div> <div>Max 60W</div> <div>E27</div> <div>Code</div> <div>395</div> <div>Certification</div> <div>CE</div> <div>Finishes</div> <div><div></div> 01st</div> <div><div></div> 44</div>

Perla specifications



Perla 35  
Dimmable  
With dimmable bulbs only

Source  
Max 30W-FL  
Max 150W-HAL  
E27

Code  
800

Certification  
CE

Finishes  
22



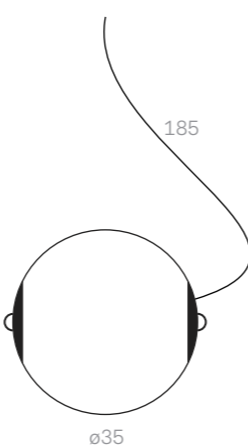
Perla 35 SC  
Dimmable  
With dimmable bulbs only

Source  
Max 30W-FL  
Max 150W-HAL  
E27

Code  
801

Certification  
CE

Finishes  
22



Perla 35 M  
Dimmable  
With dimmable bulbs only

Source  
Max 30W-FL  
Max 150W-HAL  
E27

Code  
802

Certification  
CE

Finishes  
22



Perla 28  
Dimmable  
With dimmable bulbs only

Source  
Max 30W-FL  
Max 150W-HAL  
E27

Code  
810

Certification  
CE

Finishes  
22



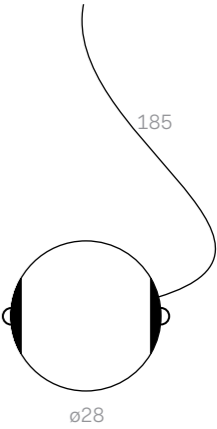
Perla 28 SC  
Dimmable  
With dimmable bulbs only

Source  
Max 30W-FL  
Max 150W-HAL  
E27

Code  
811

Certification  
CE

Finishes  
22



Perla 28 M  
Dimmable  
With dimmable bulbs only

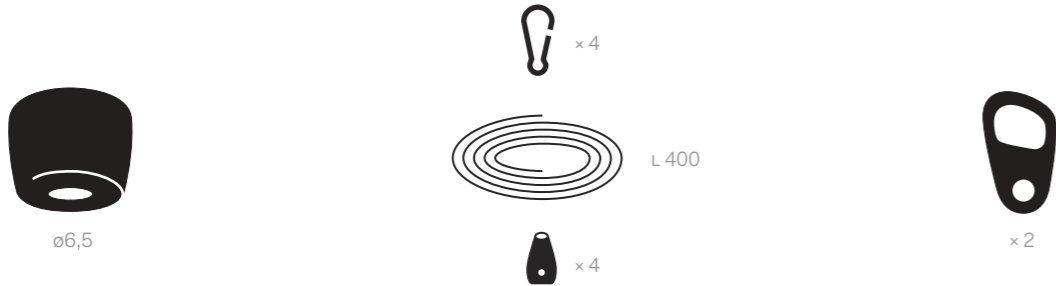
Source  
Max 30W-FL  
Max 150W-HAL  
E27

Code  
812

Certification  
CE

Finishes  
22

Perla specifications



Perla Ceiling Rose

Code  
825

Finishes  
 22

Notes  
Indoor use only

Perla Set Ropes

Code  
820

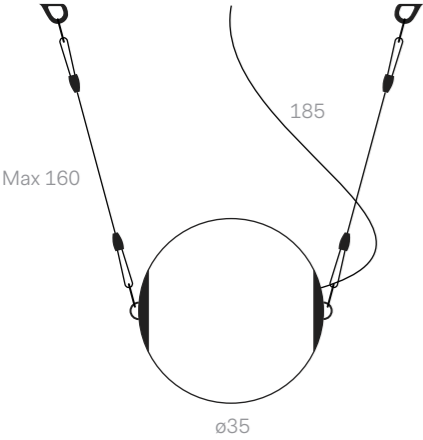
Finishes  
 22

Perla Set Hooks

Code  
821

Finishes  
 22

Perla Garden specifications



Perla Garden 35  
Dimmable  
With dimmable bulbs only

Source  
Max 30W-FL  
Max 60W-HAL  
E27

Code  
860

Certification  
CE IP65

Finishes  
02



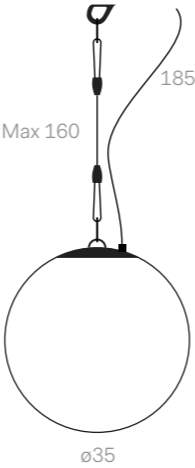
Perla Garden 35 M  
Dimmable  
With dimmable bulbs only

Source  
Max 30W-FL  
Max 60W-HAL  
E27

Code  
861

Certification  
CE IP65

Finishes  
02



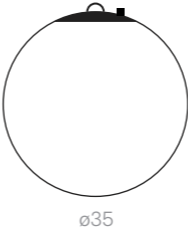
Perla Mono 35  
Dimmable  
With dimmable bulbs only

Source  
Max 30W-FL  
Max 60W-HAL  
E27

Code  
850

Certification  
CE IP65

Finishes  
02



Perla Mono 35 M  
Dimmable  
With dimmable bulbs only

Source  
Max 30W-FL  
Max 60W-HAL  
E27

Code  
851

Certification  
CE IP65

Finishes  
02





LUMINA Italia SrL, Via Casorezzo 63  
20010 Arluno, Milano, Italia  
Tel +39 0290 3752, [www.lumina.it](http://www.lumina.it)