



SANTA & COLE

Cirio

Antoni Arola

2010

Inspired by the majestic lamps of the Blue Mosque in Istanbul, Antoni Arola designed Cirio in 2010. Today, the family has expanded and is presented as a system which can easily be set in a variety of compositions.

The shade, beautifully designed, is reminiscent of a candle for its shape, texture and the warmth of its light. The varying shades combined with LED capsules can be used to create different atmospheres: from the porcelain of Sargadelos (Galicia, Spain) that creates candle-like warmth, to translucent opal glass, and the opaque elegance of brass.





Materials

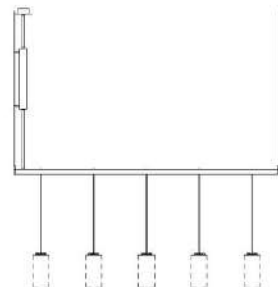


Pendant lamp

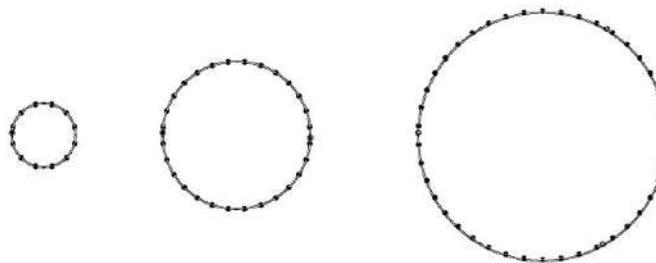
Cirio Simple



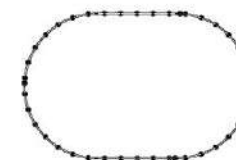
Cirio Lineal



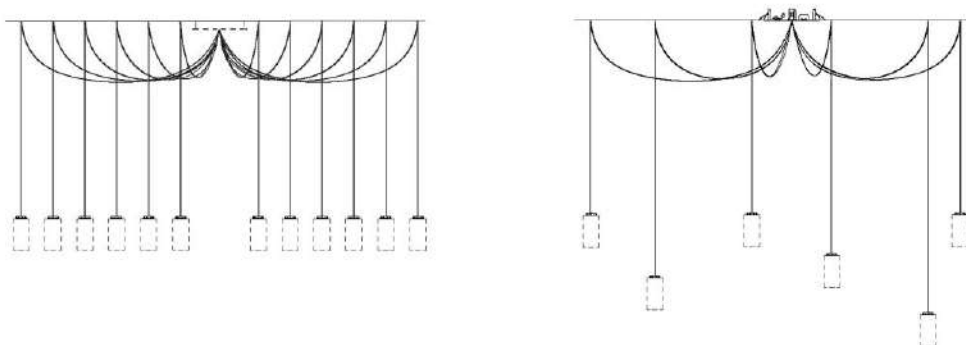
Cirio Circular S/M/L



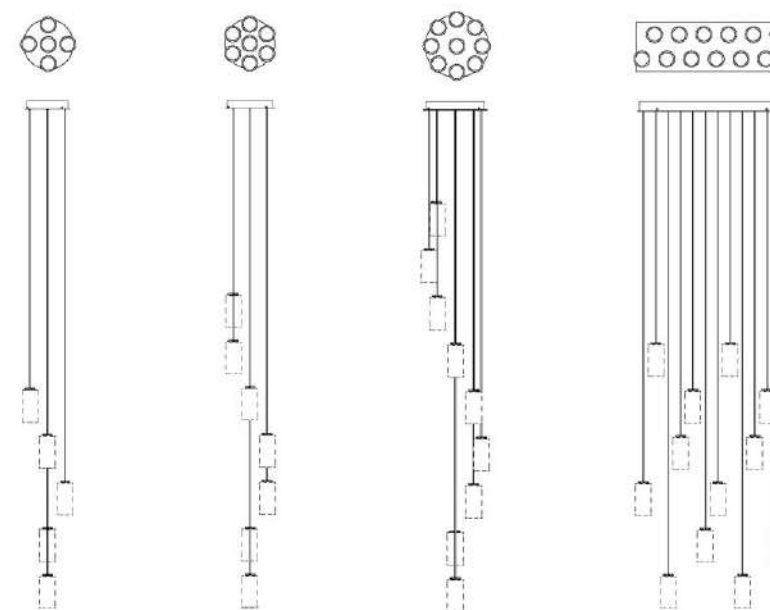
Cirio Oval



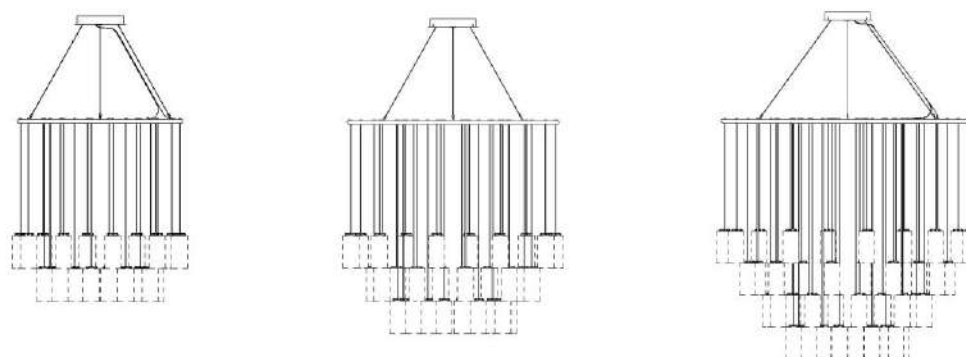
Cirio Múltiple



Cirio Cascada



Cirio Chandelier



Cirio Simple

Antoni Arola

2010

Cirio Simple comprises a canopy from which a capsule containing the LED light source hangs. It is a design that highlights room corners with utmost efficiency.

We love what we do



Pendant lamp



CANALLA BISTRO

BY RICARD CAMARENA

Hospitality

Canalla Bistro México / CDMX, Mexico
Francesc Rifé Studio



Residential



Private house, Barcelona
Piedra Papel Tijera Interiorismo



Residential



Private house / Barcelona, Spain
Lola Domènech





Institutional

Eileen Fisher Showroom
Nueva York, US.



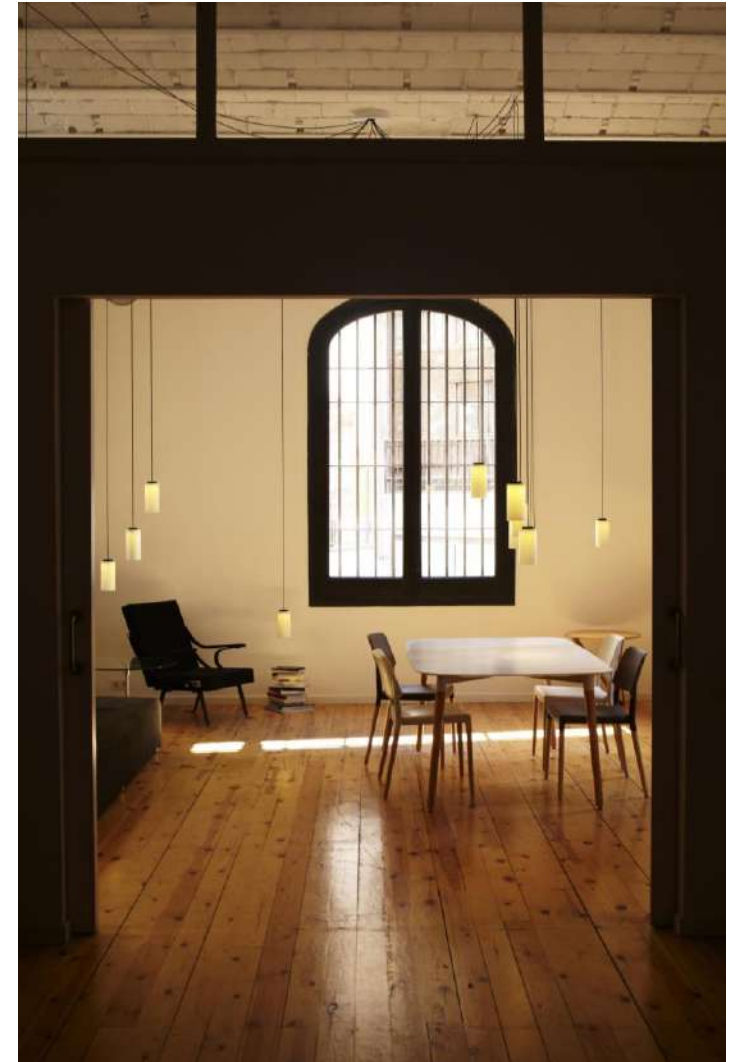


Cirio Múltiple

Antoni Arola

2010

Cirio Múltiple features a single rosette fixture holding a cluster of wires. Shades can be freely hanged from hooks wherever they are wanted. Six to twelve points of light come from one ceiling plate and are long enough to cover large halls or stairways, creating various atmospheres within the same space.



We love what we do



Pendant lamp



Residential

Single family home / Barcelona, Spain
Borrós Interiorisme



Residential

Private house / Spain
Arquitectura d'interiors



Residential

San Gervasio Dwelling / Barcelona, Spain
Isabel López Vilalta + Asociados





Hospitality

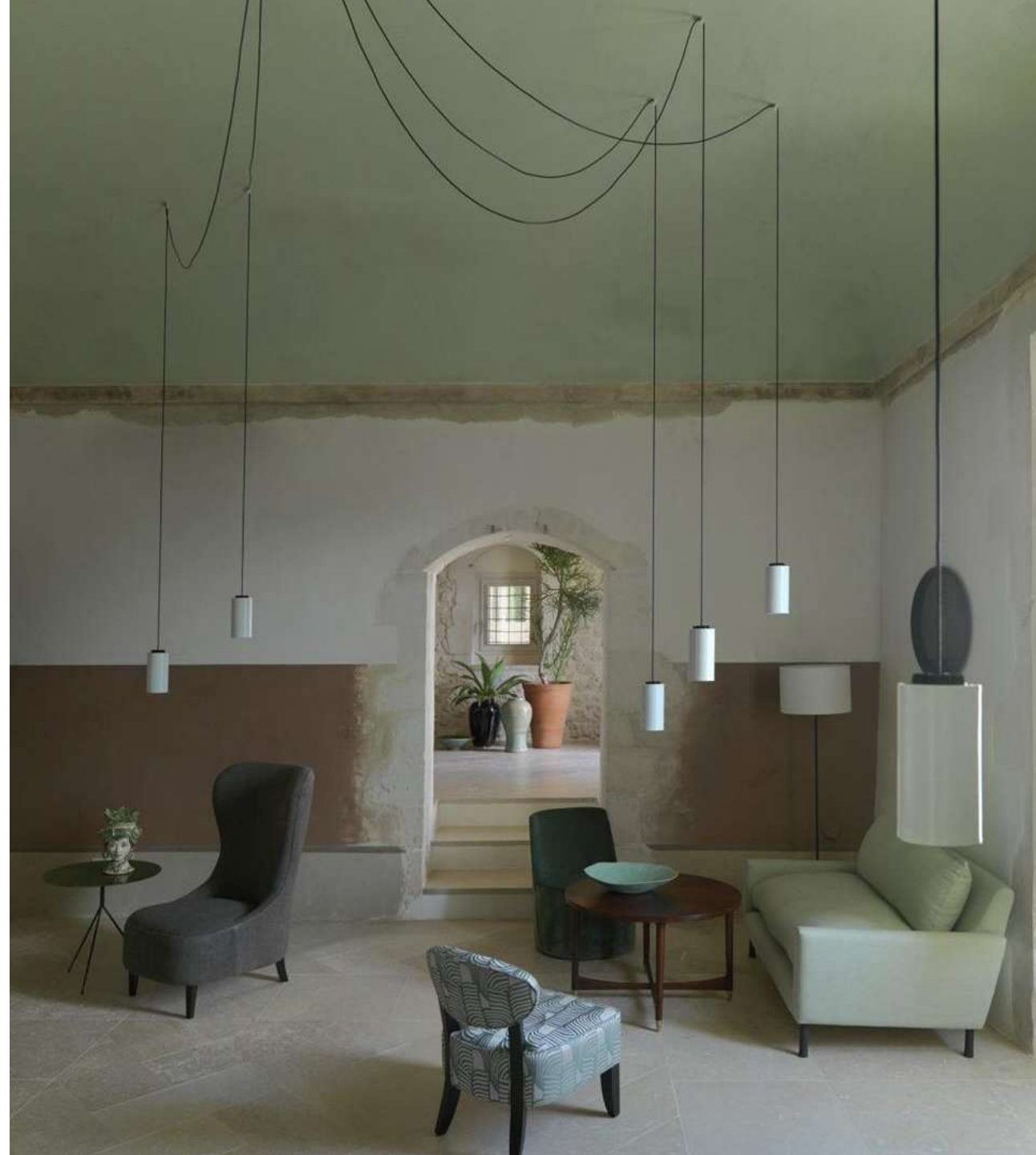


Bosco de Lobos Restaurant / Madrid, Spain
Sandra Tarruella Interioristas



Residential

Private house / Siracusa, Sicilia





Residential

Private house, Kuwait
AGi Architects



Residential



The Aerie / New York, U.S.



Residential



Single family home / Oslo, Norway
Paulsen & Nilsen



Residential

Private house / Porto, Portugal
Floret Arquitectura

Cirio Cascada

Antoni Arola

2017

Cirio Cascada features a compact, ornamental design. This shimmering cascade of light lends a warm atmosphere to large spaces; ideal for staircases and high ceilings of different heights.

We love what we do



Pendant lamp



Cirio Circular

Antonio Arola

2010

The polyvalent structure of Cirio Circular and Cirio Oval allows for circles with differing diameters to produce a range of formats. Cirio Oval combines straight lines and semi-circles, producing lamps that are as large as necessary.



We love what we do

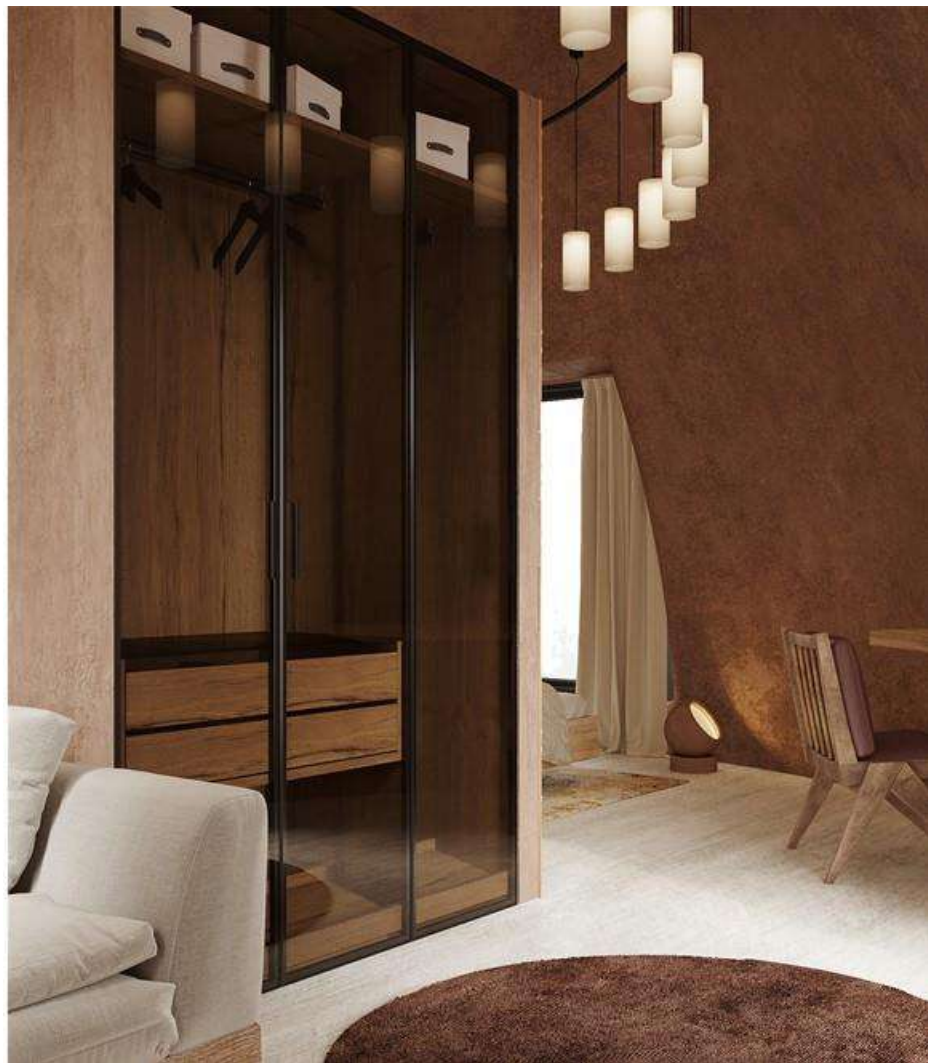


Pendant lamp



Hospitality

Casa Bonay Hotel / Barcelona, Spain
Studio Tack, NYC



Hospitality

Dome House Terracota Resort /
Ciudad Real, Spain
Punto Filipino





Institutional



Kadokawa Tokorozawa Campus / Tokyo, Japan
Float



Institutional

Princeton University, Firestone Library / NJ, U.S.
Shepley Bulfinch + Frederick Fisher and Partners





Hospitality



I Love Paris Restaurant / Charles De Gaulle Airport, Paris, France
India Mahdavi



Hostelería y restauración



Van Der Valk Restaurant
Apeldoorncon. Holland
EIKELENBOOM



Hospitality

Tower Place 100 / Atlanta, U.S.
Smallwood Architects



Hospitality



Light House Restaurant / Madrid, Spain
Isabel López + Asociados



Hospitality

Marqués de Murrieta cellar / La Rioja, Spain
Sandra Tarruella Interioristas



Hospitality



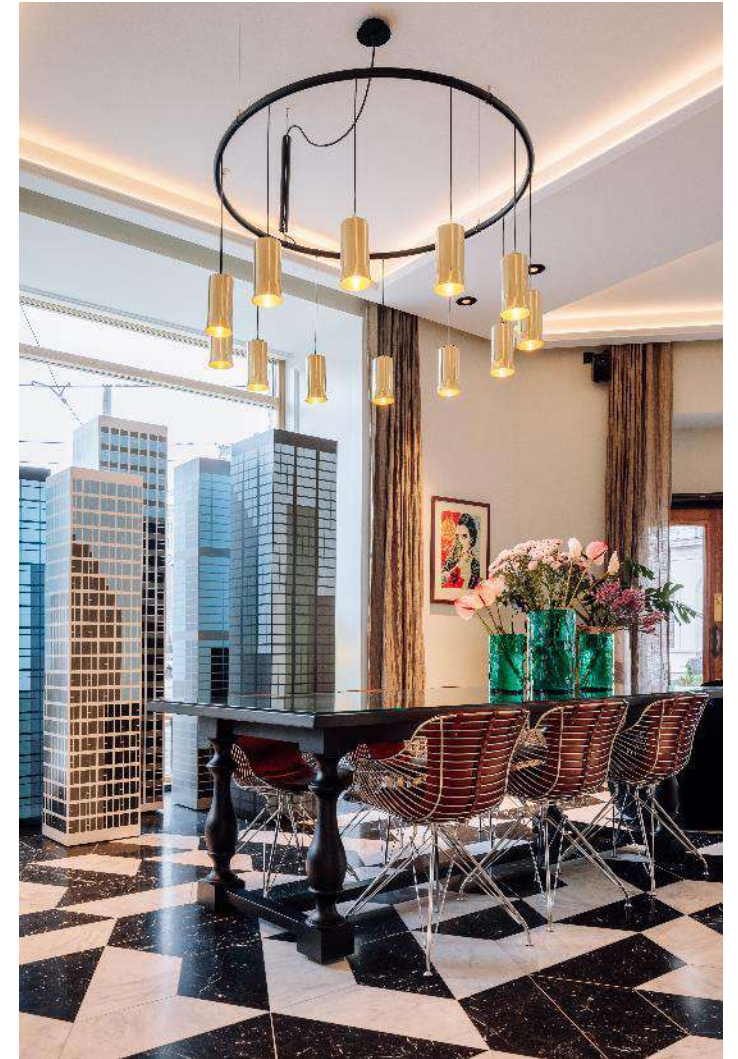
Memmo Principe Real / Portugal



Hospitality

Hotel H10 Mimosa / Barcelona, Spain





Hospitality



Amerikalinjen / Oslo, Norway



Hospitality



Wagamama. Utrecht
EIKELENBOOM



Hospitality



Gran Meliá Palacio de los Duques Hotel / Madrid, Spain



Hospitality



Le Volcan du Havre / Le Havre, France
Oscar Niemeyer



Hospitality

Cointreau Square / Angers, France
Architecte Designer Agence Jeff Van Dyck



Institutional



Institut Ramon Llull / Barcelona, Spain



Institutional



Hamad International Airport / Doha, Qatar
Citterio Architects



Retail

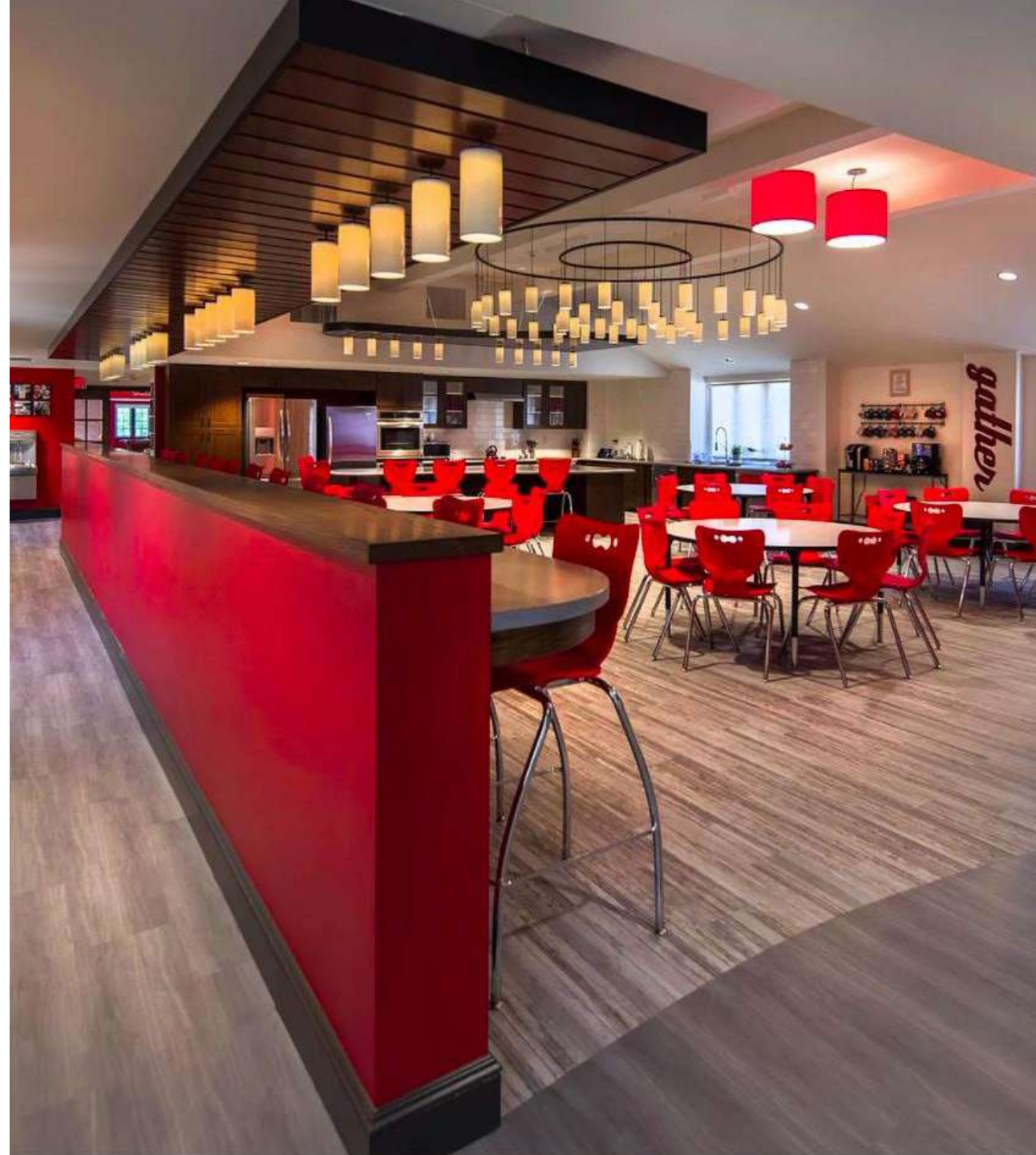
Monoprix Champs Elysée / Paris, France
Concept MONOPRIX



Cultural



Institut des cultures de l'Islam / Paris, France
Atelier LION Associés, Atelier H. Audibert, Pascal Canty (Inedit Lighting)



Centenary United Methodist Church
 New Bern, NC. U.S.
 Lambert AI

Cultural





Cultural



Escuela de Comercio de Gijón / Gijón, Spain
RUIZ+NICIEZA arquitectos





Cultural

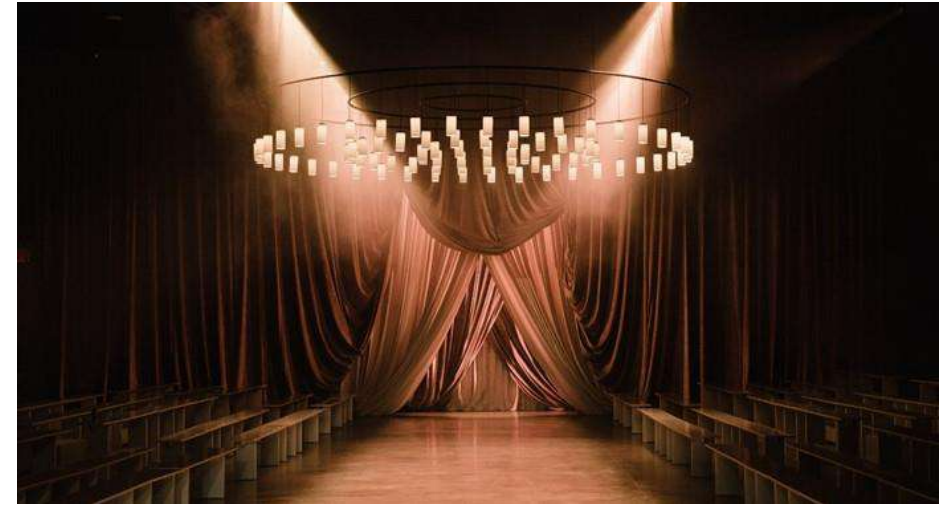


The Boone County Bourbon Press Club / Cincinnati, OH, US
MSA Architects



Cultural

Nevill Holt Opera / Leicestershire, UK
Witherford Watson Mann



Collaboration

Christopher John Rogers at NYFW
Sauras + Garriga

Cirio Chandelier

Antoni Arola

2015

The Cirio Chandelier pools a large body of light onto a focal axis that stands out hugely from its surrounding area. Its dense array of concentric rings, from which twenty, thirty and even forty light sources may be hung thanks to the enlargeable diameter of the structure, gives off a warm, powerful light with a major visual impact.



We love what we do



Pendant lamp



Residential

Single family home / Oslo, Norway
Paulsen & Nilsen



Hospitality

Le Grand Refectoire, Grand Hôtel-Dieu
Lyon, France







Hospitality

NOI restaurant - Nobis Hotel / Stockholm, Sweden
Wingårdhs

Cirio Lineal

Antoni Arola

2010

Cirio Lineal creates long lines of light by fitting together successive structures.

We love what we do



Pendant lamp



Hospitality

Casa Bonay Hotel / Barcelona, Spain
Studio Tack, NYC



Hospitality



Tower Place 100 / Atlanta, U.S.
Smallwood Architects



We love what we do

Welcome to Santa & Cole

